



Republic of the Philippines
BANGSAMORO AUTONOMOUS REGION IN MUSLIM MINDANAO
BIDS AND AWARDS COMMITTEE
OFFICE OF THE CHIEF MINISTER

Bangsamoro Government Center, Governor Gutierrez Avenue, Rosary Heights VII, Cotabato City 9600

INVITATION TO BID

NEGOTIATED PROCUREMENT-TWO FAILED BIDDINGS

LOT 10. CONSTRUCTION OF 400-UNITS CORE SHELTER WITH SOLAR POWERED LIGHT AND WATER SYSTEM COMPONENT, SOLAR STREET LIGHTS, AND LINEAR (DRAIN GRATE) CANAL SYSTEM: 1) 100-UNITS TARAWAKAN, BONGAO, 2) 50-UNITS BUAN, PANGLIMA SUGALA, 3) 50-UNITS TUNDON, PANGLIMA SUGALA, 4) 50-UNITS SIPANGKOT, SITANGKAI, 5) 50-UNITS IMAM HJI. MOHAMMAD, SIBUTU, 6) 50-UNITS PANGLIMA MASTUL, SIMUNUL, AND 7) 50-UNITS SOKAH BULAN, SIMUNUL, PROVINCE OF TAWI-TAWI

IB No. ~~FB~~-KAPYANAN-022022-02

1. In view of the two (2)- Failed biddings, the Office of the Chief Minister, through its Bids and Awards Committee (BAC), invites qualified bidders to participate in the negotiation for **LOT 10. CONSTRUCTION OF 400-UNITS CORE SHELTER WITH SOLAR POWERED LIGHT AND WATER SYSTEM COMPONENT, SOLAR STREET LIGHTS, AND LINEAR (DRAIN GRATE) CANAL SYSTEM: 1) 100-UNITS TARAWAKAN, BONGAO, 2) 50-UNITS BUAN, PANGLIMA SUGALA, 3) 50-UNITS TUNDON, PANGLIMA SUGALA, 4) 50-UNITS SIPANGKOT, SITANGKAI, 5) 50-UNITS IMAM HJI. MOHAMMAD, SIBUTU, 6) 50-UNITS PANGLIMA MASTUL, SIMUNUL, AND 7) 50-UNITS SOKAH BULAN, SIMUNUL, PROVINCE OF TAWI-TAWI**, in accordance with section 53.1 of the revised Implementing Rules and Regulation (IRR) of Republic Act No. 9184 (RA 9184), otherwise know as the "Government Procurement Reform Act".
2. The Approved Budget for the Contract is **Two Hundred Seventy-five Million, Two Hundred Twenty-six Thousand, Five Hundred Eleven Pesos and Thirty-seven Centavos (PHP 275, 226, 511. 37)** inclusive all applicable taxes.

Bids received in excess of the ABC shall be automatically rejected
3. The BAC will hold the first negotiation on **February 24, 2022, 9:00 a.m.** at **Bajau hall, Office of the Chief Minister, Bangsamoro Government Center, Cotabato City**. The bidders are required to submit six (6) copies of its eligibility, technical and financial documents enumerated in Annex "A", which is attached hereto. Bids should be submitted in a sealed envelope.
4. Following the completion of the first negotiation, all prospective bidders are invited to submit its best and final offer to the BAC, through its secretariat, **on or before February 28, 2022, 9:00 a.m.** in the address given below.

5. For further information, please refer to:

Bids and Awards Committee Secretariat

Procurement Service

1st floor, OCM-Annex Building, Bangsamoro Government Center,

Bangsamoro Government Center, Gov. Gutierrez Ave.,

Rosary Heights VII, Cotabato City

ocmbac@bangsamoro.gov.ph

0917-831-7214



MOHD ASNIN K. PENDATUN

Chairperson, Bids and Awards Committee

SPECIFICATIONS AND PROJECT DESCRIPTIONS

<p><u>CORE SHELTER WITH POWER</u></p>	<p>Donated LOT Area: 1.5 Hectare/barangay (minimum)</p> <ul style="list-style-type: none"> • Floor Area: 49 sq.m. • Smooth finish concrete wall surfaces (in & out) • Fully paint surfaces; Roofing, Walling, & Ceiling Areas • Steel Trusses and Furring ceiling joist • Wooden fascia board • Interior & exterior plywood ceiling • Paint stripes wall design • Concrete flooring • Concrete kitchen sink area • 3 Bedrooms • 2-windows for Bedroom 1 & Bedroom 3 (2-span/set), 1-window for Bedroom 2 (2-span/set) • Wooden form partition (double walling) • CR tiles flooring
<p><u>SOLAR POWERED LIGHT (Package per House)</u></p>	<ul style="list-style-type: none"> • Installation of Solar Panel 100 Watts with complete accessories (mounted battery & panel controller) • 9 LED Light 5 watts each with receptacle. • 3 convenience outlets • Complete installation of power and light wirings.
<p><u>WATER COMPONENT</u></p> <p>NOTE: Provision of PVC drum for rain catchment design with concrete pedestal, gutter and downspout for island provinces.</p>	<p>Level II Water System Design capacity: minimum of 5 head per household (1-unit elevated water tank/50hh per barangay)</p> <ul style="list-style-type: none"> • Concrete elevated platform • Water source (deep well drilling) must be 30m radius away from public sewerage or septic tank • Machine operated by Solar Power • PVC tank for water storage (3500 liters capacity) • Pump house for water pump & chlorinator machine, and blue drum for water purification process. • 2 tap stands with concrete flooring with 2 adjacent faucets each • Embedded pipeline of transmission to distribution line

Manpower and Equipment Requirements

Key Personnel	General Experience	Relevant Experience
1 Project Engineer	With experience on general construction	With experience on actual vertical structures for at least two (2) years specifically in community development project such as Core Shelter, Housing, water system facilities, sewage system.

		With knowledge in Autocad and plan review.
2 Civil Engineer	With experience on general construction	With experience on actual vertical structure construction implementation and finishing of works on both building and water system projects for at least two (2) years. With knowledge in Autocad and plan review.
1 Electrical Engineer	With experience on general electrical works	With experience on solar power system.
1 Materials Engineer	With experience on quality control	With experience on actual vertical structure construction implementation and finishing of works on both building and water system projects for at least two (2) years. Ensuring all materials used and work performed are as per specifications.
1 Safety Officer	With experience on general construction	With experience as a Safety Engineer or Safety Officer in construction site for at least one (1) year.
Construction Foreman (One at every 50 units)	With experience on general construction	With experience on actual vertical structure construction implementation and finishing of works for at least two (2) years. With knowledge on plan execution.
1 Master Plumber	With experience on general construction	With experience in water system, sewerage and drainage system for at least two (2) years.

Minimum Major Equipment Requirements

Equipment	Capacity	Number of units
Dump Truck	7 cu.m	3 per Lot
Excavator (Backhoe)	0.40 cu.m	1 per Lot
Concrete Mixer	1 bagger	1 at every 50 units
Plate Compactor	Power Gen. BD170F (4.2HP)	1 per Lot
Ground water Drilling Machine	130m drill depth, 220mm max. diameter	1 per Lot
Welding Machine	300 amperes	1 at every 50 units

LICENSE CATEGORY; IRR of Republic Act 9184

Third Stage of Adjustment on Allowable Ranges of Contract Costs (ARCC) and Single Largest Project (SLP) Completed / Track Record Requirements (Board Resolution No. 201, series of 2017)			
Size Range	License Category	Single Largest Project (P)	Allowable Ranges of Contract Costs (P)
Large B	AAAA and AAA	Above 225 Million	< or above 450 Million
Large A	AA	Above 150 Million up to 225 Million	Up to 450 Million
Medium B	A	Above 75 Million up to 150 Million	Up to 300 Million
Medium A	B	Above 15 Million up to 75 Million	Up to 150 Million
Small B	C & D	< 15 Million	Up to 30 Million
Small A	Trade/E	Up to 1 Million	Up to 1 Million

Note: Par. 3 of Sec. 23.11.2 of the IRR of RA 9184 allows Small A and Small B contractors without similar experience to bid only for contracts not more than fifty percent (50%) of the allowable range of contract cost of their respective size range(s).



Republic of the Philippines
Bangsamoro Autonomous Region in Muslim Mindanao
OFFICE OF THE CHIEF MINISTER



KAPPYANNAN

Project Management Office
Kapayapaan sa Pamayanan

**CONSTRUCTION OF 6500 UNITS CORE SHELTER
WITH SOLAR POWERED LIGHT AND WATER
COMPONENT, SOLAR STREETLIGHTS AND
CONCRETE LINED CANAL SYSTEM IN BARMM
REGION**

PREPARED BY:

CHECKED & APPROVED BY:

RECOMMENDED/ENDORSED BY:

APPROVED BY:

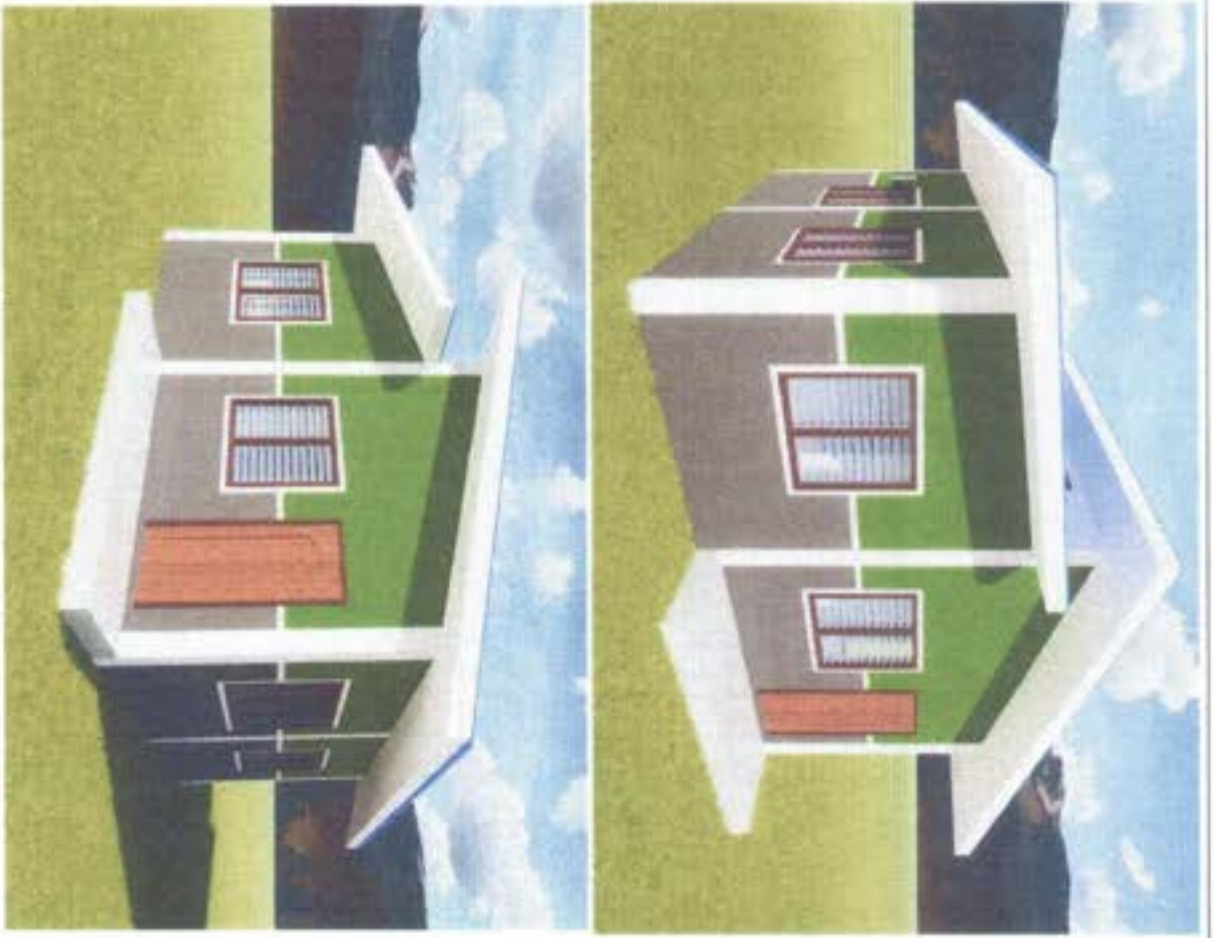
BY THE AUTHORITY OF THE CHIEF MINISTER
AHMAD BALAWANG EBRAHIM


NISSAM BALIT, CIVIL
ENGR. PROJECT COORDINATOR
KAPPYANNAN


ENGR. ABDULWAHID K. USMANI
SENIOR PROJECT COORDINATOR
KAPPYANNAN


APOLLINA COSMAN
PROJECT MANAGER
KAPPYANNAN


ABDULRAHMAN MACACA
SENIOR PROJECT
COORDINATOR



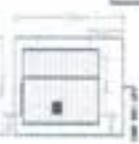
PERSPECTIVES



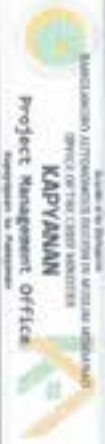
LOCATION MAP



DEVELOPMENT PLAN



DETAILS



MANAJEMEN LAYANAN KEARIFAN BUDAYA
 DIVISI PERENCANAAN DAN KONTROL MUTU
KAPYANAN
 Project Management Office

PROJEK FINIS
 KONSTRUKSI 04 1000 LAMPAH CONTO SEMENTER, DENGAN SOLAR
 POWERED LIGHT AND WATER COMPONEN, SOLAR
 STRUTTING AND CONCRETE 1000 GALI, TERTAMA
 LOKASI: **SABANG BOGOM**

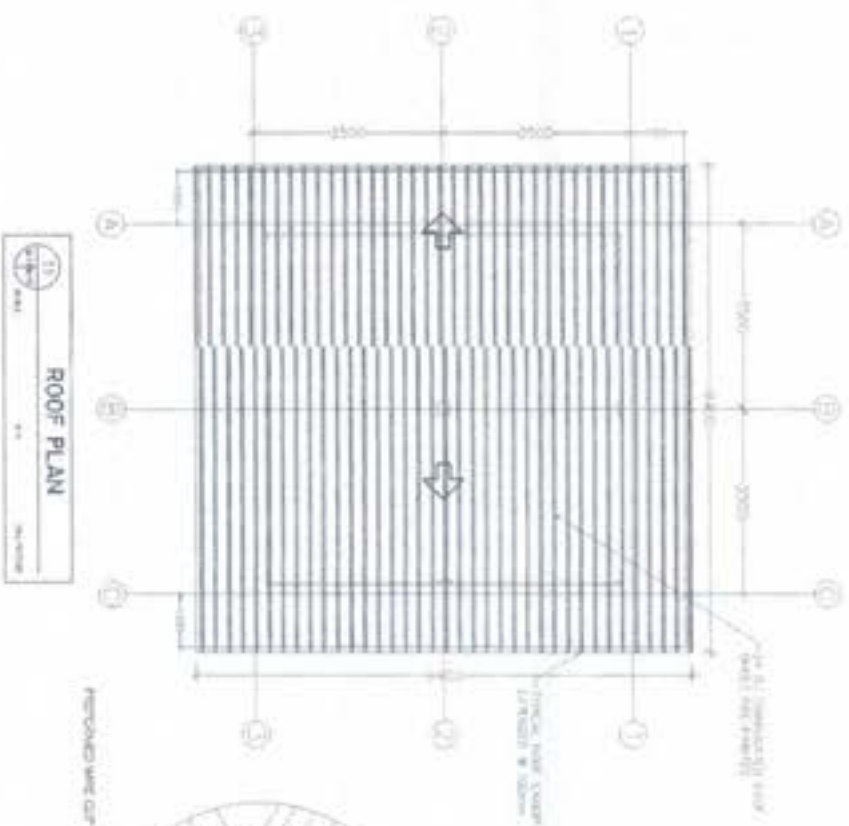
PERENCANAAN

REVISI DAN KOREKSI

REVISI DAN KOREKSI

REVISI DAN KOREKSI

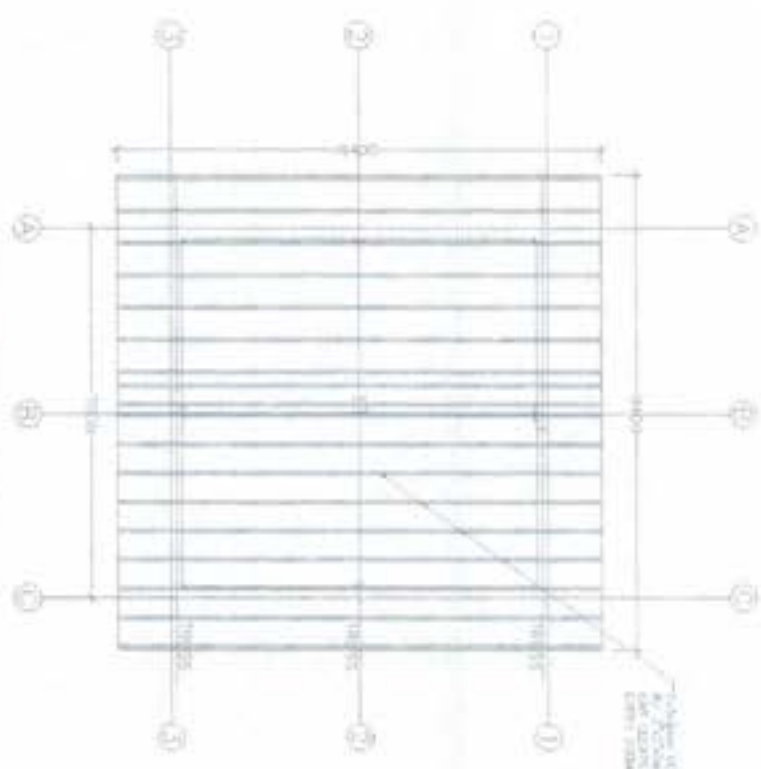
REVISI DAN KOREKSI



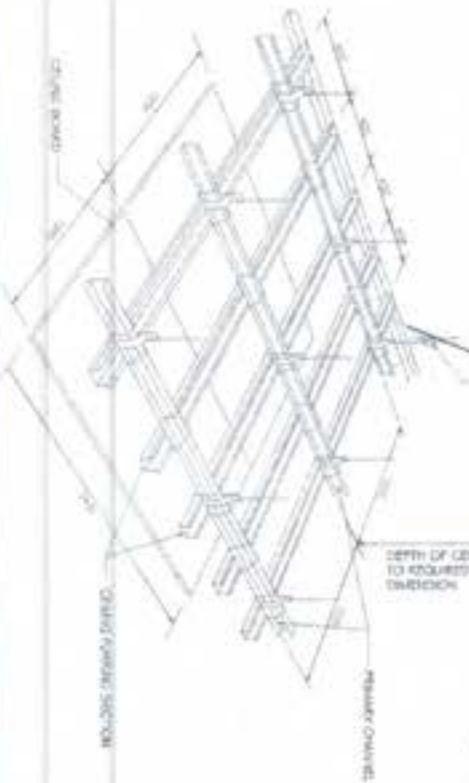
ROOF PLAN
DATE: 01/11/2018



DETAIL



ROOF FRAMING PLAN
DATE: 01/11/2018



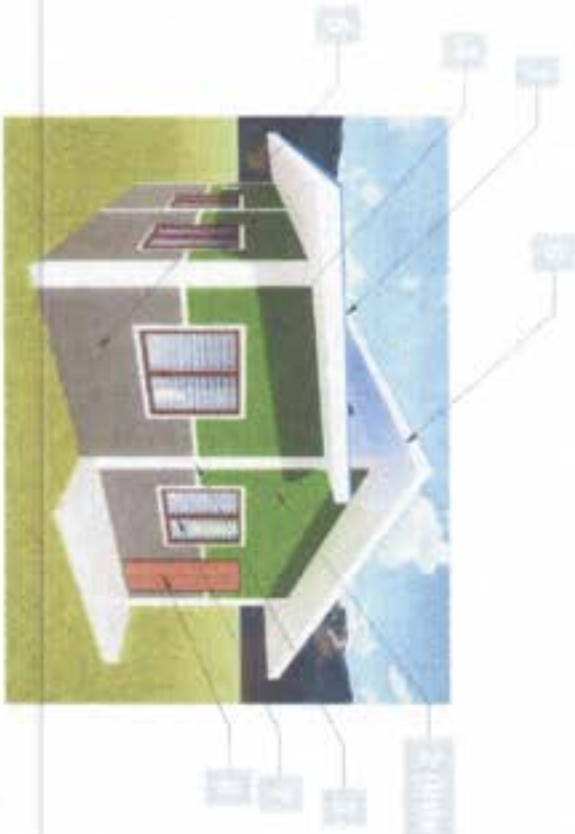


SCHEDULE OF DOORS AND WINDOWS

NO.	QTY	HEIGHT	WIDTH	REMARKS
D-1	1	2150	1000	PANEL DOOR
D-2	3	1750	300	FLOOR DOOR
D-3	1	2150	300	TOILET DOOR
D-4	1	2150	300	PASS LEGAL DOOR
W-1	4	1200	1200	WOODEN FRAME AND ALUMINUM GLASS
W-2	1	1700	2000	QUARTER FRAME AND ALUMINUM GLASS
W-3	1	1200	2000	RECREATIVE CONC. BLOCK
W-4	1	1200	2000	RECREATIVE CONC. BLOCK

EXTERIOR SCHEDULE

NO.	DESCRIPTION/AMT	QTY	UNIT	REMARKS
1	FINISHING	1	SQ. M.	CONCRETE
2	WALL SURFACE INTERIOR	1	SQ. M.	PLASTER
3	WALL SURFACE EXTERIOR	1	SQ. M.	PLASTER
4	WALL ROOF FINISH	1	SQ. M.	PLASTER
5	WALL ROOF FINISH	1	SQ. M.	PLASTER
6	CEILING and facade board	1	SQ. M.	PLASTER
7	SPRINT JAGS	1	SQ. M.	PLASTER
8	ROOF	1	SQ. M.	PLASTER

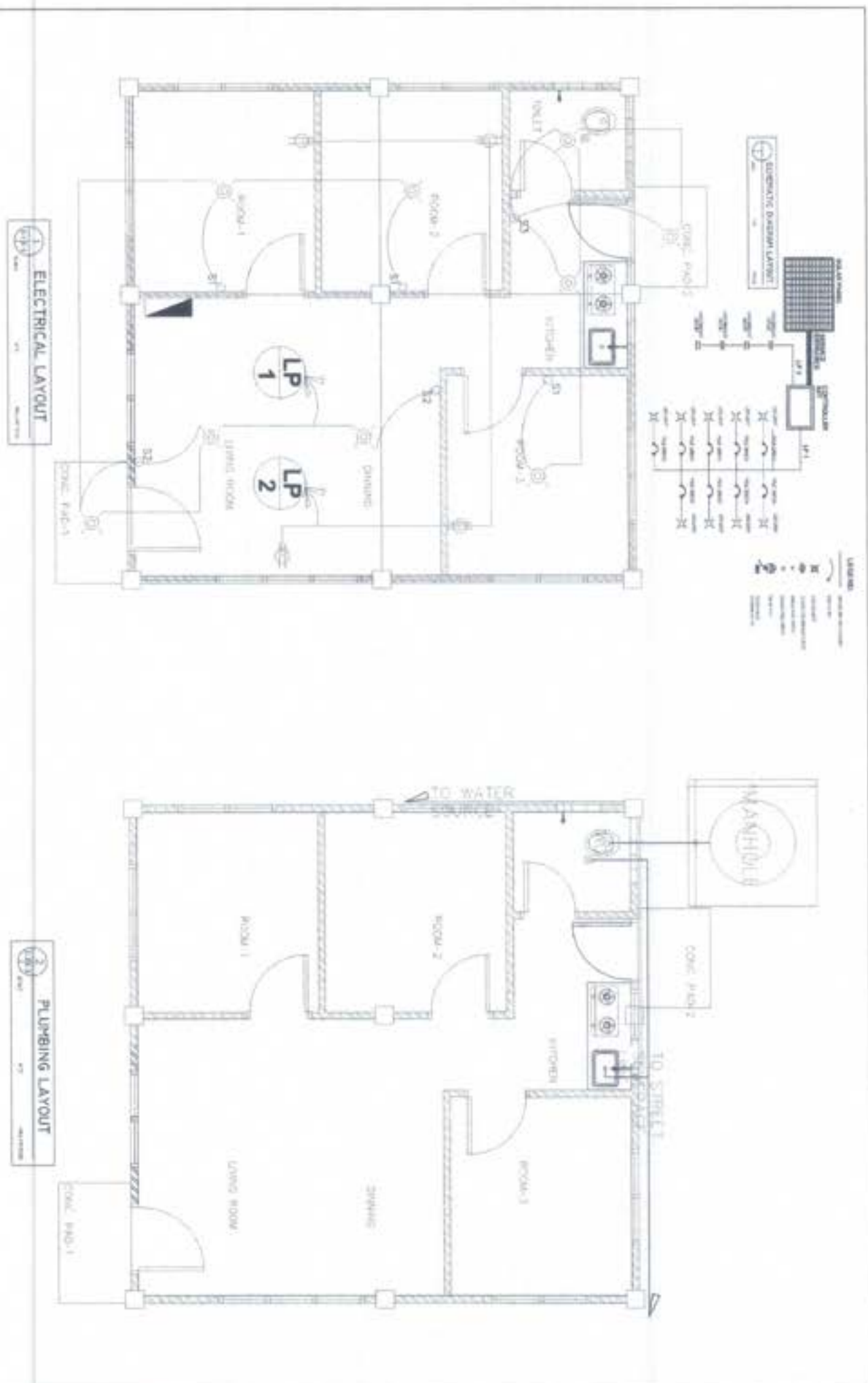



 KADYAMAN
 Project Management Office
 Construction of 400 Units Core Sector with Social Distribution and Cohort Land Civil Works

PROJECT TITLE: **CONSTRUCTION OF 400 UNITS CORE SECTOR WITH SOCIAL DISTRIBUTION AND COHORT LAND CIVIL WORKS**
 LOCATION: **MAKAPU BIODIVERSITY**

DESIGNED BY: 
 CHECKED & APPROVED BY: 
 RECOMMENDED APPROVAL BY: 
 APPROVED BY: 

DRAWING NO: **D-1**
 SHEET NO: **01**
 TOTAL SHEETS: **01**



ELECTRICAL LAYOUT

PLUMBING LAYOUT

	PROJECT TITLE CONSTRUCTION OF 1500 UNITS COOP SHEDS WITH SOLAR POWERED LIGHT AND VENTILATION COMPONENT, SOLAR STREETLIGHTS AND CHARGER LIGHT CABLE SYSTEMS	PROJECT NO. KAPYAMAN/2018/001	CHECKED & APPROVED BY 	ELECTRICAL ENGINEER APPROVED BY 	APPROVED BY 	DRAWING NO. E-1
	PROJECT NO. KAPYAMAN/2018/001	ARCHITECT APPROVED BY 	APPROVED BY 	SHEET NO. 7/11		

GENERAL NOTES:

ALL PLUMBING WORKS INCLUDED HEREIN SHALL BE EXECUTED ACCORDING TO THE PROVISIONS OF THE NATIONAL PLUMBING CODE AND THE NATIONAL BUILDING CODE. COORDINATE THE DRAWING WITH OTHER RELATED DRAWINGS AND SPECIFICATION. THE ENGINEER/ARCHITECT SHALL BE NOTIFIED IMMEDIATELY OF ANY DISCREPANCY FOUND THEREIN.

ALL PIPES SHALL BE INSTALLED AS INDICATED ON PLANS. ANY RELOCATIONS REQUIRED FOR PROPER EXECUTION OF OTHER TRADE SHALL BE WITH PRIOR APPROVAL OF THE ARCHITECT OR ENGINEER.

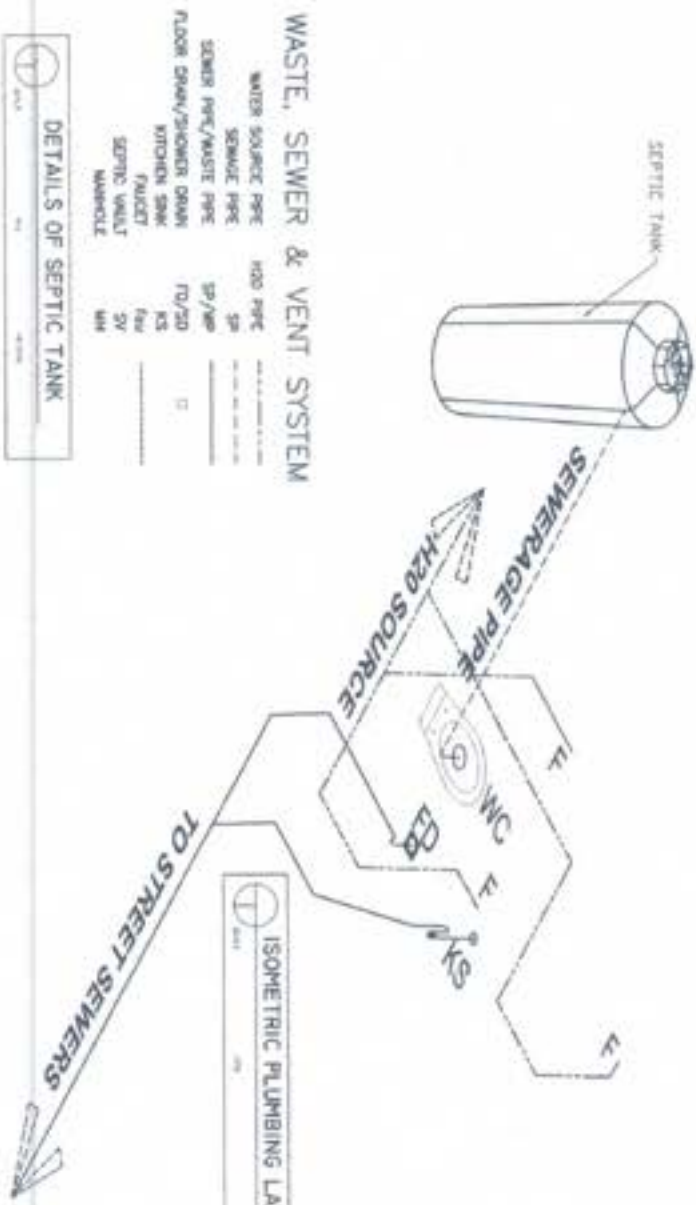
PROPOSED SANITARY UTILITIES SHALL CONFORM TO THE ACTUAL LOCATION, DEPTH AND INVERT ELEVATION OF ALL EXISTING PIPES AND STRUCTURES AS VERIFIED BY THE CONTRACTOR.

ALL SLOPES FOR HORIZONTAL DRAINAGE SHALL MAINTAIN 1% UNLESS OTHERWISE SPECIFIED. SIZE OF WATER SUPPLY PIPES TO FIXTURES SHALL BE IN ACCORDANCE WITH THE MANUFACTURER'S INSTRUCTIONS.

THE CONTRACTOR SHALL VERIFY ALL EXISTING UTILITIES AT SITE, COORDINATE THE WORKS WITH THE SEWER LINE EFFLUENT DISPOSAL POINT AND WATER LINE SERVICE CONNECTING POINT.



SEPTIC CONC. DETAILS



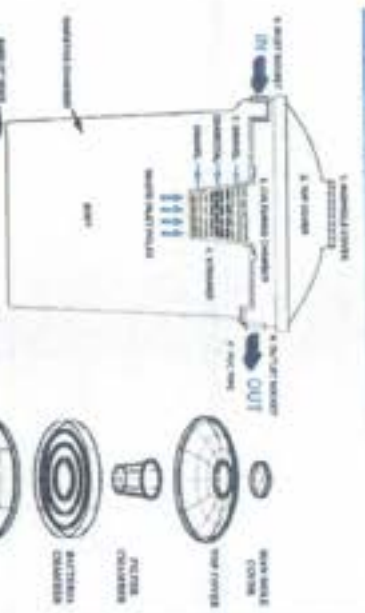
WASTE, SEWER & VENT SYSTEM

WATER SOURCE PIPE	H2O PIPE	SP	---
SEWER PIPE	SP	---	---
SEWER PIPE/WASTE PIPE	SP/WP	---	---
FLOOR DRAIN/SINKER DRAIN	FD/SD	---	---
KITCHEN SINK	KS	---	---
WASHER	WA	---	---
SEPTIC UNIT	SV	---	---
WAPORILE	WA	---	---

DETAILS OF SEPTIC TANK

PLASTIC RINGING SEPTIC TANK

INSTALLATION



ITEM NO.	DESCRIPTION	QUANTITY	UNIT
1	1.00m (3.28ft) LONG	1	PC
2	1.00m (3.28ft) LONG	1	PC
3	1.00m (3.28ft) LONG	1	PC
4	1.00m (3.28ft) LONG	1	PC
5	1.00m (3.28ft) LONG	1	PC
6	1.00m (3.28ft) LONG	1	PC
7	1.00m (3.28ft) LONG	1	PC
8	1.00m (3.28ft) LONG	1	PC
9	1.00m (3.28ft) LONG	1	PC
10	1.00m (3.28ft) LONG	1	PC
11	1.00m (3.28ft) LONG	1	PC
12	1.00m (3.28ft) LONG	1	PC
13	1.00m (3.28ft) LONG	1	PC
14	1.00m (3.28ft) LONG	1	PC
15	1.00m (3.28ft) LONG	1	PC
16	1.00m (3.28ft) LONG	1	PC
17	1.00m (3.28ft) LONG	1	PC
18	1.00m (3.28ft) LONG	1	PC
19	1.00m (3.28ft) LONG	1	PC
20	1.00m (3.28ft) LONG	1	PC
21	1.00m (3.28ft) LONG	1	PC
22	1.00m (3.28ft) LONG	1	PC
23	1.00m (3.28ft) LONG	1	PC
24	1.00m (3.28ft) LONG	1	PC
25	1.00m (3.28ft) LONG	1	PC
26	1.00m (3.28ft) LONG	1	PC
27	1.00m (3.28ft) LONG	1	PC
28	1.00m (3.28ft) LONG	1	PC
29	1.00m (3.28ft) LONG	1	PC
30	1.00m (3.28ft) LONG	1	PC
31	1.00m (3.28ft) LONG	1	PC
32	1.00m (3.28ft) LONG	1	PC
33	1.00m (3.28ft) LONG	1	PC
34	1.00m (3.28ft) LONG	1	PC
35	1.00m (3.28ft) LONG	1	PC
36	1.00m (3.28ft) LONG	1	PC
37	1.00m (3.28ft) LONG	1	PC
38	1.00m (3.28ft) LONG	1	PC
39	1.00m (3.28ft) LONG	1	PC
40	1.00m (3.28ft) LONG	1	PC
41	1.00m (3.28ft) LONG	1	PC
42	1.00m (3.28ft) LONG	1	PC
43	1.00m (3.28ft) LONG	1	PC
44	1.00m (3.28ft) LONG	1	PC
45	1.00m (3.28ft) LONG	1	PC
46	1.00m (3.28ft) LONG	1	PC
47	1.00m (3.28ft) LONG	1	PC
48	1.00m (3.28ft) LONG	1	PC
49	1.00m (3.28ft) LONG	1	PC
50	1.00m (3.28ft) LONG	1	PC
51	1.00m (3.28ft) LONG	1	PC
52	1.00m (3.28ft) LONG	1	PC
53	1.00m (3.28ft) LONG	1	PC
54	1.00m (3.28ft) LONG	1	PC
55	1.00m (3.28ft) LONG	1	PC
56	1.00m (3.28ft) LONG	1	PC
57	1.00m (3.28ft) LONG	1	PC
58	1.00m (3.28ft) LONG	1	PC
59	1.00m (3.28ft) LONG	1	PC
60	1.00m (3.28ft) LONG	1	PC
61	1.00m (3.28ft) LONG	1	PC
62	1.00m (3.28ft) LONG	1	PC
63	1.00m (3.28ft) LONG	1	PC
64	1.00m (3.28ft) LONG	1	PC
65	1.00m (3.28ft) LONG	1	PC
66	1.00m (3.28ft) LONG	1	PC
67	1.00m (3.28ft) LONG	1	PC
68	1.00m (3.28ft) LONG	1	PC
69	1.00m (3.28ft) LONG	1	PC
70	1.00m (3.28ft) LONG	1	PC
71	1.00m (3.28ft) LONG	1	PC
72	1.00m (3.28ft) LONG	1	PC
73	1.00m (3.28ft) LONG	1	PC
74	1.00m (3.28ft) LONG	1	PC
75	1.00m (3.28ft) LONG	1	PC
76	1.00m (3.28ft) LONG	1	PC
77	1.00m (3.28ft) LONG	1	PC
78	1.00m (3.28ft) LONG	1	PC
79	1.00m (3.28ft) LONG	1	PC
80	1.00m (3.28ft) LONG	1	PC
81	1.00m (3.28ft) LONG	1	PC
82	1.00m (3.28ft) LONG	1	PC
83	1.00m (3.28ft) LONG	1	PC
84	1.00m (3.28ft) LONG	1	PC
85	1.00m (3.28ft) LONG	1	PC
86	1.00m (3.28ft) LONG	1	PC
87	1.00m (3.28ft) LONG	1	PC
88	1.00m (3.28ft) LONG	1	PC
89	1.00m (3.28ft) LONG	1	PC
90	1.00m (3.28ft) LONG	1	PC
91	1.00m (3.28ft) LONG	1	PC
92	1.00m (3.28ft) LONG	1	PC
93	1.00m (3.28ft) LONG	1	PC
94	1.00m (3.28ft) LONG	1	PC
95	1.00m (3.28ft) LONG	1	PC
96	1.00m (3.28ft) LONG	1	PC
97	1.00m (3.28ft) LONG	1	PC
98	1.00m (3.28ft) LONG	1	PC
99	1.00m (3.28ft) LONG	1	PC
100	1.00m (3.28ft) LONG	1	PC

INSTALLATION



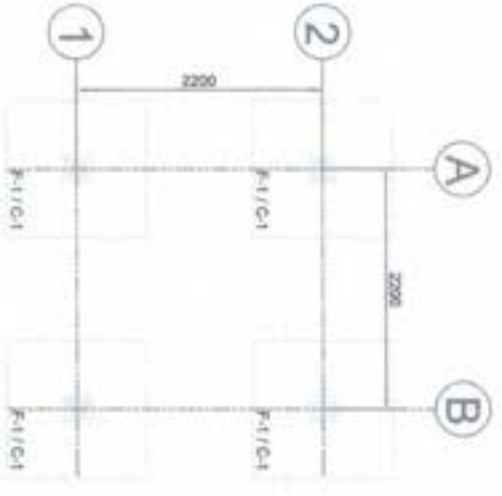
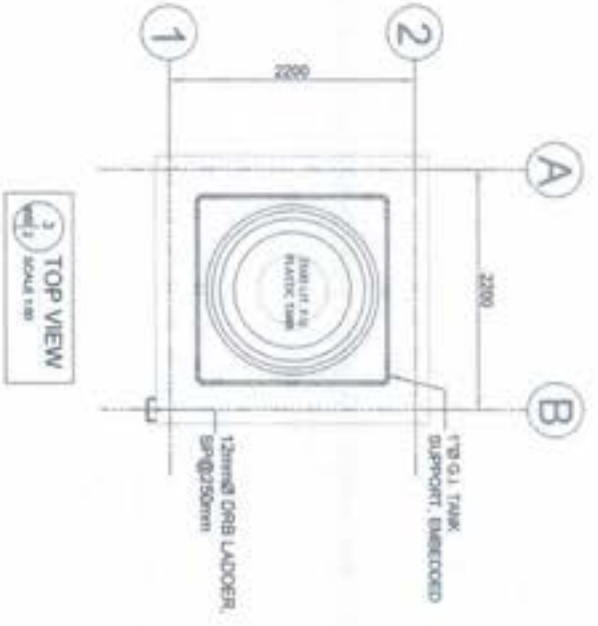
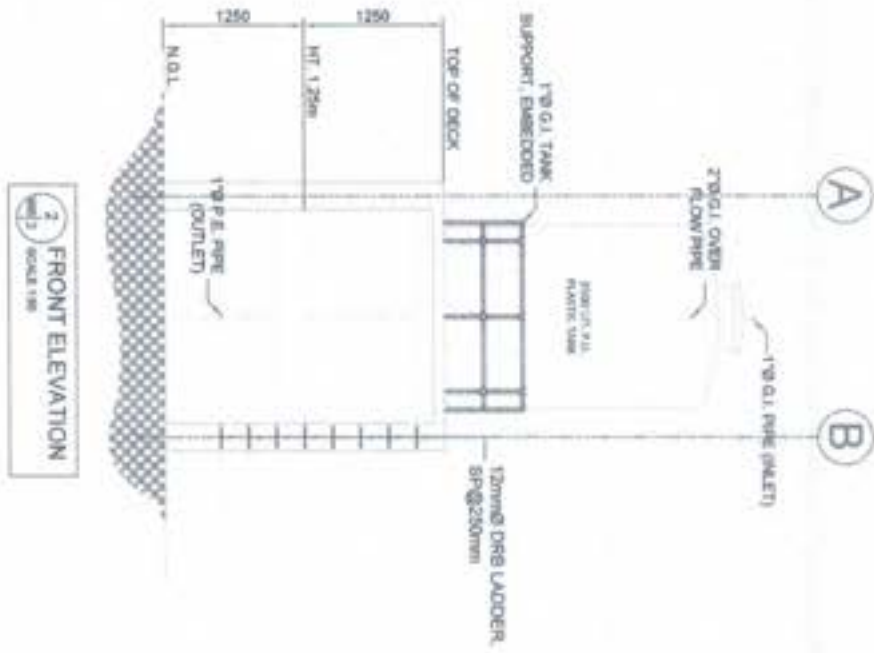
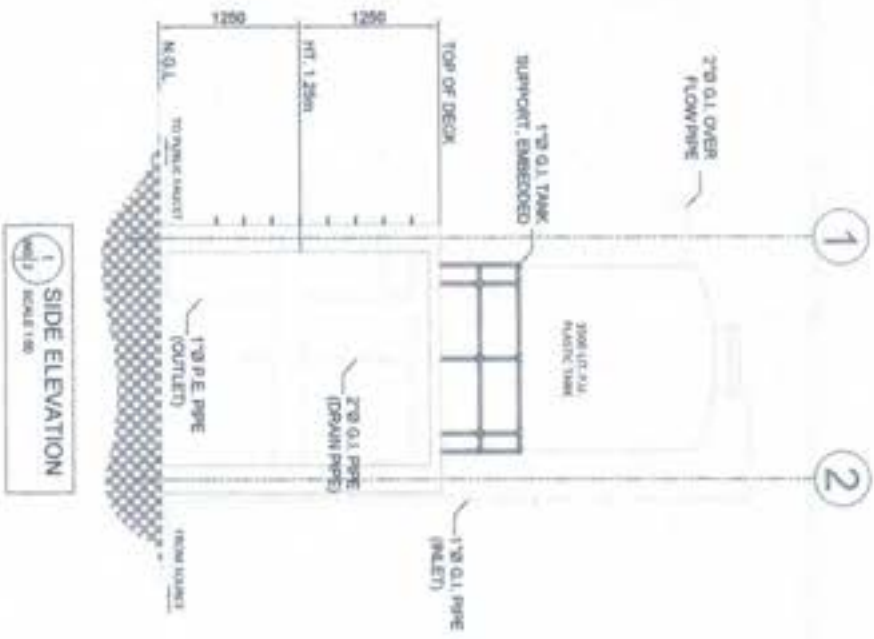
PROJECT TITLE: CONSTRUCTION OF 400 UNITS COMB. SEWER WITH SOLID FLOATED LIFT AND WASTE COMPONENT, SOLAR STREETS AND COHERENT URBAN CANAL SYSTEM
LOCATION: SAMAHA BEACH

PREPARED BY:

CONSULTED & REVIEWED BY:

APPROVED BY:

DATE: 8/18



4 FOUNDATION PLAN
SCALE 1:50

1 SIDE ELEVATION
SCALE 1:50

3 FRONT ELEVATION
SCALE 1:50

2 TOP VIEW
SCALE 1:50

Anggota & ex Anggota
KONSTRUKSI AUTONOMOUS REGION IN NEGARA MERDEKA
OFFICE OF THE CHIEF ARCHITECT
KAPYANAN
Kementerian Perumahan
& Kerajaan Tempatan

CONSTRUCTION OF 6500 LITRE CORC
SHELTER WITH SOLAR PUMPED LIGHT
AND WATER CONNECTION
KUALA LUMPUR, MALAYSIA

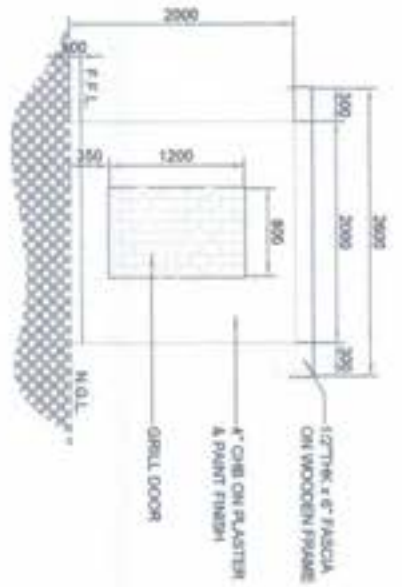
DESIGNED BY
[Signature]
ATMAN ABUHAMAD
ARCHITECT AND ENGINEER
SPECIALIST (P.L.)

ENGINEER
[Signature]
ENGR. ANSOORI K. CHANAN
Specialist (P.L.)
KUALA LUMPUR, MALAYSIA

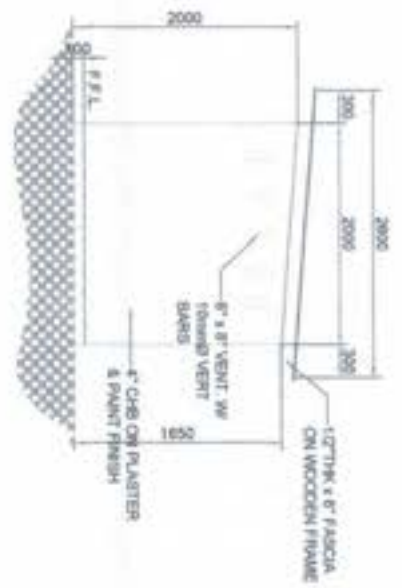
ARCHITECT/ARTIST
[Signature]
WISLUDA B. CHIDAM
ARCHITECT
KUALA LUMPUR, MALAYSIA

APPROVED BY
AND DRAINAGE DESIGNER
[Signature]
ABDULLAH M. MAMUD
ARCHITECT
KUALA LUMPUR, MALAYSIA

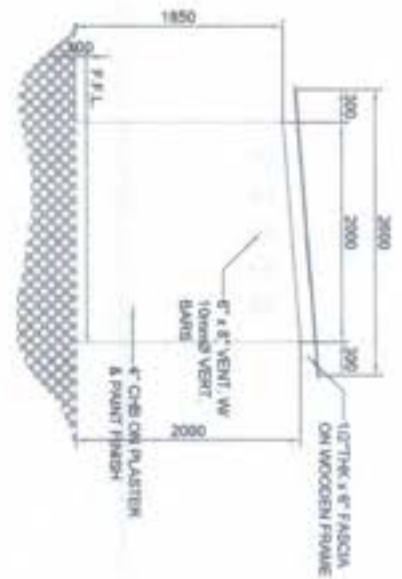
ISSUED BY
MR-2
10/16



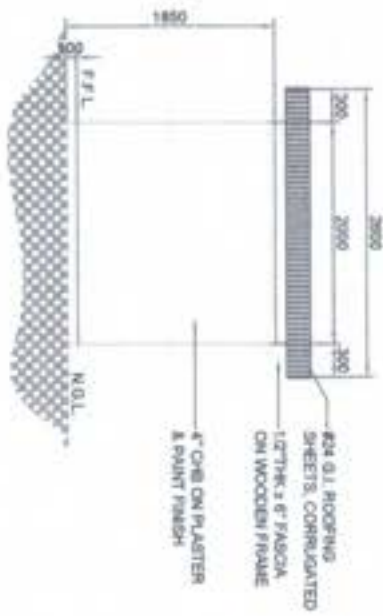
1
PUMP HOUSE FRONT ELEV.
SCALE 1/8\"/>



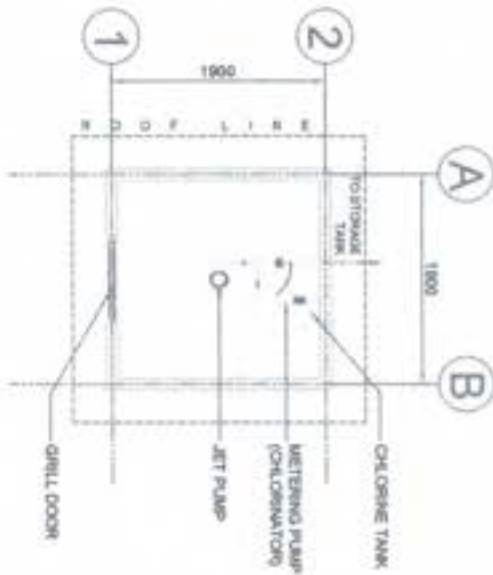
2
PUMP HOUSE RIGHT SIDE ELEV.
SCALE 1/8\"/>



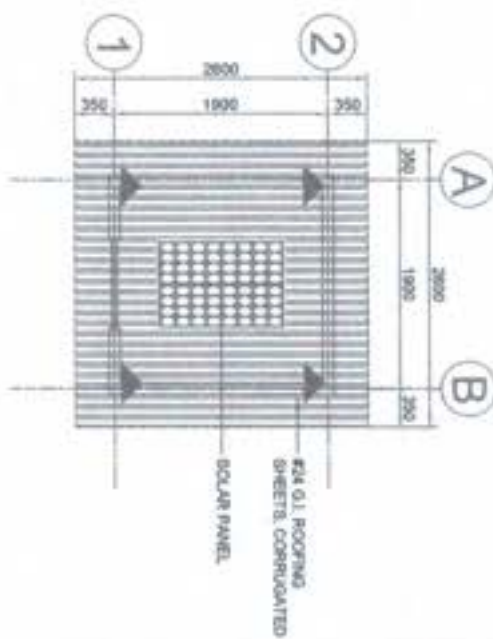
3
PUMP HOUSE LEFT SIDE ELEV.
SCALE 1/8\"/>



4
PUMP HOUSE REAR ELEV.
SCALE 1/8\"/>



5
PUMP HOUSE FLOOR PLAN
SCALE 1/8\"/>



6
PUMP HOUSE ROOF PLAN
SCALE 1/8\"/>

Republic of the Philippines
BANGSAMORO AUTONOMOUS REGION IN MUGLIM BARAW
OFFICE OF THE CHIEF MINISTER
KAPYANAN
Kapatang-makabayan ng Bangsamoro

PROJECT TITLE
CONSTRUCTION OF 6500 LITERS COPE
SHEETER WITH SOLAR POWERED JET
AND BATTERY COMPONENT
LOCATION: SAKALAN REGION

DESIGNED BY
[Signature]
Engr. Abdulhadi R. Usman
Checked By
[Signature]
Engr. Abdulhadi R. Usman

DATE: 10/06/2021

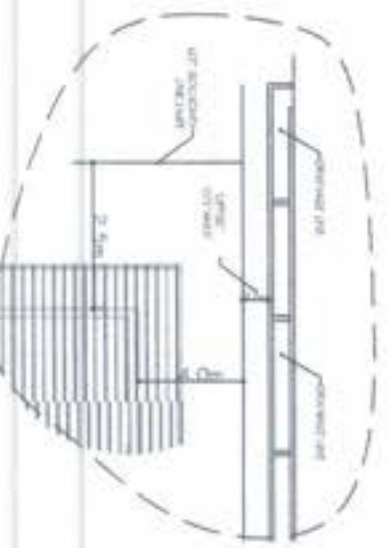
APPROVED BY
[Signature]
Engr. Abdulhadi R. Usman
Checked By
[Signature]
Engr. Abdulhadi R. Usman

FOR THE ARCHITECT OF THE CHIEF MINISTER
ARCHITECT: *[Signature]*
ENGR. ABDULHADI R. USMAN
Checked By
[Signature]
Engr. Abdulhadi R. Usman

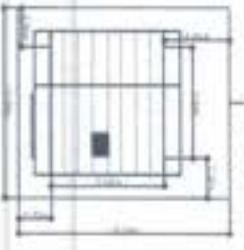
DATE: 10/06/2021



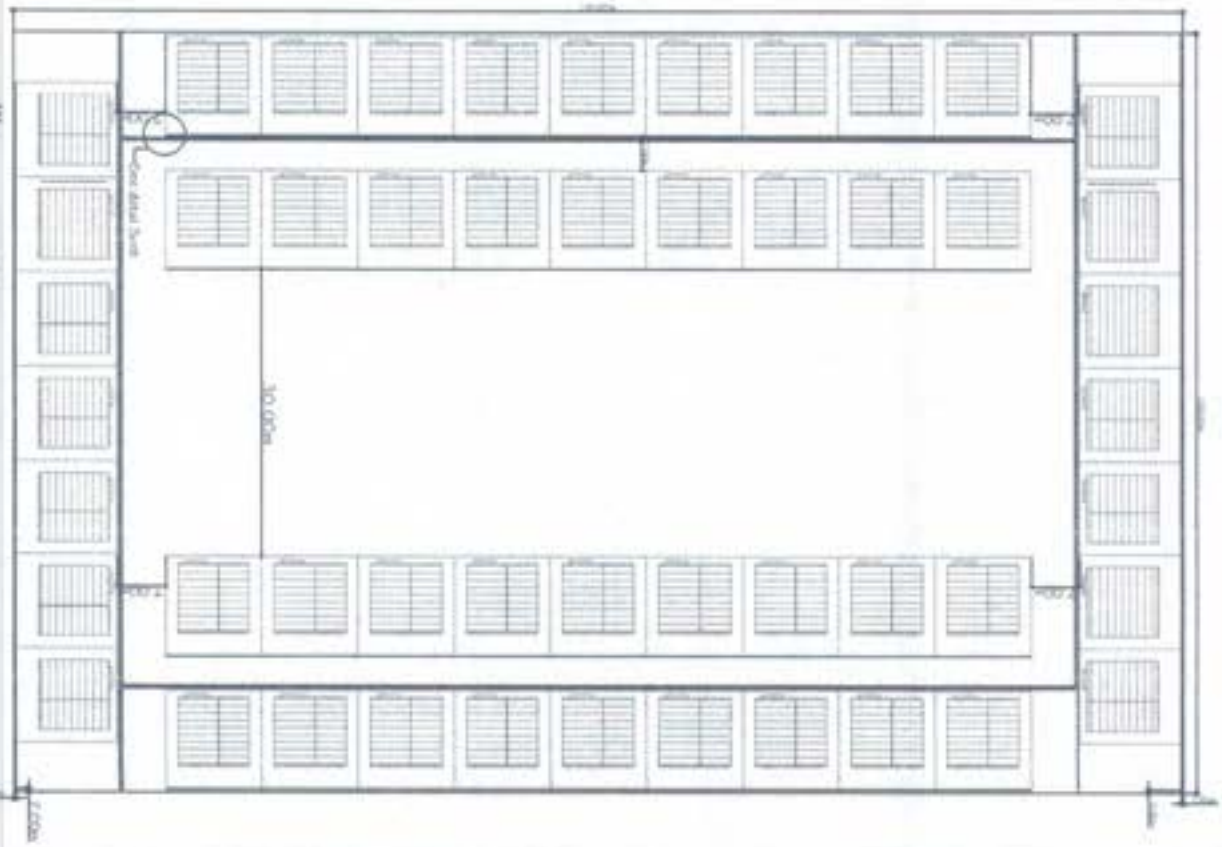
PERSPECTIVE
SCALE 1:100



DETAILS



DETAILS



SITE DEVELOPMENT PLAN
SCALE 1:500



Ministry of Agriculture and Fisheries
KAPYANAN
Project Management Office

PROJECT TITLE
CONSTRUCTION OF CONCRETE LINED CANAL
(IRIAN GABATI) SYSTEM
LOCATION
BAYAN BEKOH

DESIGNED BY
[Signature]
KARTINI SARIAN

CHECKED BY
[Signature]
DINA LINDA KURNIA & DISMAN
KARTINI SARIAN

RECOMMENDING APPROVAL
[Signature]
KARTINI SARIAN

APPROVED BY
[Signature]
ANAS SAKAWAN SARIAN
KARTINI SARIAN

DRAWING NO.
SAL 1
SHEET NO.
1/51



PERSPECTIVE

Item	Description	Quantity	Unit	Price	Total
1
2
3
4
5
6
7
8
9
10

Item	Description	Quantity	Unit	Price	Total
1
2
3
4
5
6
7
8
9
10

Approved Specifications of all other items shown (if any)

Item	Description	Quantity	Unit	Price	Total
1
2
3
4
5
6
7
8
9
10

Technical Parameters

Item	Description	Quantity	Unit	Price	Total
1
2
3
4
5
6
7
8
9
10

KAPYANAN KAPYANAN KAPYANAN	PROJECT TITLE DEVELOPMENT OF ...	PROJECT NO. ...	DATE OF



Republic of the Philippines
BANGSAMORO AUTONOMOUS REGION IN MUSLIM MINDANAO
BIDS AND AWARDS COMMITTEE
OFFICE OF THE CHIEF MINISTER

Bangsamoro Government Center, Governor Gutierrez Avenue, Rosary Heights VII, Cotabato City 9600

Contract ID
 Contract Name

Lot-10: CONSTRUCTION OF 400-UNITS CORE SHELTER WITH SOLAR POWERED LIGHT AND WATER SYSTEM COMPONENT, SOLAR STREET LIGHTS, AND LINEAR (DRAIN GRATE) CANAL SYSTEM: 1) 100-units Tarawakan, Bongao; 2) 50-units Buan, Panglima Sugala; 3) 50-units Tundon, Panglima Sugala; 4) 50-units Sipangkot, Sitangkai; 5) 50-units Imam Hj. Mohammad, Sibutu; 6) 50-units Panglima Mastul, Simunul; 7) 50-units Sokah Bulan, Simunul; TAWI-TAWI

Location of the Contract

BILL OF QUANTITIES

Part No.: _____ Description: _____

PAY ITEM NO.	DESCRIPTION	UNITS	QUANTITY	UNIT PRICE (PESOS)	AMOUNT (PESOS)
(1)	(2)	(3)	(4)	(5)	(6)
PART I: FACILITIES FOR THE ENGINEER					
A.1.1(8)	Provision of Field Office for the Engineer (Rental Basis)	month	10.00	In Words: Pesos In Figures: Php	In Figures: Php
PART II: OTHER GENERAL REQUIREMENTS					
B.5	Project Billboard/ Signboard	each	8.00	In Words: Pesos In Figures: Php	In Figures: Php
B.7(1)	Occupational Safety & Health Program	month	10.00	In Words: Pesos In Figures: Php	In Figures: Php
B.9	Mobilization/Demobilization	ts	1.00	In Words: Pesos In Figures: Php	In Figures: Php
PART III: CIVIL, MECHANICAL, ELECTRICAL, AND SANITARY/PLUMBING WORKS					
III.1 CORE SHELTER WITH SOLAR POWERED LIGHTS					
803(1)a	Structure Excavation (Foundation; Ftg., WF, TB)	m ²	5,544.00	In Words: Pesos In Figures: Php	In Figures: Php
803(1)a	Structure Excavation (Septic Vault)	m ²	360.00	In Words: Pesos In Figures: Php	In Figures: Php
804(1)a	Embankment from Structure Excavation (Foundation; Ftg., WF, TB)	m ³	4,068.00	In Words: Pesos In Figures: Php	In Figures: Php
900(1)c2	Structural Concrete (Ftg., WF, SoF; Class A, 28 days)	m ³	3,212.00	In Words: Pesos In Figures: Php	In Figures: Php
902(1)b	Reinforcing Steel (Ftg., WF, SoF; G-60)	kg	126,071.00	In Words: Pesos In Figures: Php	In Figures: Php
900(1)c3	Structural Concrete (TB; Class A, 28 days)	m ³	616.00	In Words: Pesos In Figures: Php	In Figures: Php
902(1)b	Reinforcing Steel (TB, G-60)	kg	72,534.00	In Words: Pesos In Figures: Php	In Figures: Php

900(1)c4	Structural Concrete (Col.; Class A, 28 days)	m³	821.25	In Words: Pesos	In Figures: Php
				In Figures: Php	
902(1)b	Reinforcing Steel (Col.; G-60)	kg	96,702.19	In Words: Pesos	In Figures: Php
				In Figures: Php	
900(1)c6	Structural Concrete (Beams / Girders; Class A, 28 days)	m³	770.00	In Words: Pesos	In Figures: Php
				In Figures: Php	
902(1)b	Reinforcing Steel (Beams / Girders; G-60)	kg	90,667.50	In Words: Pesos	In Figures: Php
				In Figures: Php	
903(2)	Formworks and Falseworks	m²	14,400.00	In Words: Pesos	In Figures: Php
				In Figures: Php	
1046(2)a1	CHB Non Load Bearing (including Reinforcing Steel, 100mmTHK)	m³	11,232.00	In Words: Pesos	In Figures: Php
				In Figures: Php	
1046(3)	Louver Blocks (LT; T&B and Kitchen)	m²	648.00	In Words: Pesos	In Figures: Php
				In Figures: Php	
1010(2)b	Doors (0.90m x 2.10m Mahogany Panel Door - Cylinder Lockset, D-1)	m²	756.00	In Words: Pesos	In Figures: Php
				In Figures: Php	
1010(1)	Frames (50mm x 125mmTHK Mahogany Door Jamb, D-1)	set	400.00	In Words: Pesos	In Figures: Php
				In Figures: Php	
1010(2)a	Doors (0.80m x 2.10m Hollow Core Flush Type Swing Door w/ Ordinary Plywood Inside and Outside, D-2)	m²	2,688.00	In Words: Pesos	In Figures: Php
				In Figures: Php	
1010(1)	Frames (50mm x 125mmTHK Mahogany Door Jamb, D-2)	set	1,600.00	In Words: Pesos	In Figures: Php
				In Figures: Php	
1010(2)a	Doors (0.70m x 2.10m PVC Hollow Core Flush Type Swing Door, D-3)	m²	588.00	In Words: Pesos	In Figures: Php
				In Figures: Php	
1009(1)a	Jalousie Windows (1.30mH x 0.80mW x 5mmTHK Jalousie Windows on 50x125mm Wooden Jamb w/ Clear Glass Blades, W-1)	m²	1,248.00	In Words: Pesos	In Figures: Php
				In Figures: Php	
1009(1)a	Jalousie Windows (1.30mH x 1.60mW x 5mmTHK Jalousie Windows on 50x125mm Wooden Jamb w/ Clear Glass Blades, W-2)	m²	3,328.00	In Words: Pesos	In Figures: Php
				In Figures: Php	
1009(1)a	Jalousie Windows (1.30mH x 2.40mW x 5mmTHK Jalousie Windows on 50x125mm Wooden Jamb w/ Clear Glass Blades, W-3)	m²	3,744.00	In Words: Pesos	In Figures: Php
				In Figures: Php	
1027(1)	Cement Plaster Finish	m²	6,912.00	In Words: Pesos	In Figures: Php
				In Figures: Php	
1018(2)	Unglazed Tiles (200mm x 200mm Vitrified Unglazed Tiles Floor Finish)	m²	1,024.00	In Words: Pesos	In Figures: Php
				In Figures: Php	
1003(1)a1	Ceiling (4.5mmTHK Fiber Cement Board on Metal Ceiling Frame w/ Ceiling Vent)	m²	35,344.00	In Words: Pesos	In Figures: Php
				In Figures: Php	

1003(2)a1	Wall (4.5mmTHK Fiber Cement Board on Metal Wall Frame, Double Wall Partition)	m ²	46,008.00	In Words: Pesos	In Figures: Php
				In Figures: Php	
1032(1)a	Painting Works (Masonry/Concrete)	m ²	6,912.00	In Words: Pesos	In Figures: Php
				In Figures: Php	
1032(1)b	Painting Works (Wood)	m ²	81,352.00	In Words: Pesos	In Figures: Php
				In Figures: Php	
1014(1)b1	Prepainted Metal Sheets (0.5mmTHK Corrugated Metal Sheets, Long Span)	m ²	35,344.00	In Words: Pesos	In Figures: Php
				In Figures: Php	
1047(2)a	Structural Steel (Steel Trusses)	kg	83,772.00	In Words: Pesos	In Figures: Php
				In Figures: Php	
1047(2)b	Structural Steel (Purlins & Fascia Frame)	kg	172,368.00	In Words: Pesos	In Figures: Php
				In Figures: Php	
1001(8)	Sewer Line Works (Pipes, Fittings, and Fixtures)	Ls	1.00	In Words: Pesos	In Figures: Php
				In Figures: Php	
1002(24)	Waterline Works	Ls	1.00	In Words: Pesos	In Figures: Php
				In Figures: Php	
1001(13)	Septic Vault (Polyethylene Septic Tank 1000 Lit Cap. w/ Complete Accessories)	ea	400.00	In Words: Pesos	In Figures: Php
				In Figures: Php	
1100(10)	Conduits, Boxes and Fittings (Conduit Works/Conduit Rough-in)	Ls	1.00	In Words: Pesos	In Figures: Php
				In Figures: Php	
1101(33)	Wires and Wiring Devices	Ls	1.00	In Words: Pesos	In Figures: Php
				In Figures: Php	
1103(1)	Lighting Fixtures and Lamps	Ls	1.00	In Words: Pesos	In Figures: Php
				In Figures: Php	
1102(1)	Panelboard with Main & Branch Breakers	Ls	1.00	In Words: Pesos	In Figures: Php
				In Figures: Php	
1102(18)	Solar Panel with Inverter, Battery and Other Devices	Ls	1.00	In Words: Pesos	In Figures: Php
				In Figures: Php	
BL2 WATER SYSTEM COMPONENT					
803(1)a	Structure Excavation (Foundation, Ftg. & WF)	m ³	63.94	In Words: Pesos	In Figures: Php
				In Figures: Php	
804(1)a	Embankment from Structure Excavation (Foundation; Ftg. & WF)	m ³	47.23	In Words: Pesos	In Figures: Php
				In Figures: Php	
900(1)c2	Structural Concrete (Ftg., WF, SoF; Class A, 28 days)	m ³	18.58	In Words: Pesos	In Figures: Php
				In Figures: Php	
902(1)b	Reinforcing Steel (Ftg., WF, SoF; G-60)	kg	1,458.84	In Words: Pesos	In Figures: Php
				In Figures: Php	
900(1)c4	Structural Concrete (Col.; Class A, 28 days)	m ³	6.90	In Words: Pesos	In Figures: Php
				In Figures: Php	

902(1)b	Reinforcing Steel (Col.; G-60)	kg	1,083.30	In Words: Pesos In Figures: Php	In Figures: Php
900(1)c6	Structural Concrete (Beams / Girders; Class A, 28 days)	m ³	6.16	In Words: Pesos In Figures: Php	In Figures: Php
902(1)b	Reinforcing Steel (Beams / Girders; G-60)	kg	967.12	In Words: Pesos In Figures: Php	In Figures: Php
903(2)	Formworks and Falseworks	m ²	131.20	In Words: Pesos In Figures: Php	In Figures: Php
1046(2)a1	CHB Non Load Bearing (including Reinforcing Steel, 100mmTHK)	m ³	151.68	In Words: Pesos In Figures: Php	In Figures: Php
1027(1)	Cement Plaster Finish	m ²	268.80	In Words: Pesos In Figures: Php	In Figures: Php
1032(1)a	Painting Works (Masonry/Concrete)	m ²	268.80	In Words: Pesos In Figures: Php	In Figures: Php
1014(1)b1	Prepainted Metal Sheets (0.5mmTHK Corrugated Metal Sheets, Long Span)	m ²	54.08	In Words: Pesos In Figures: Php	In Figures: Php
1003(5)	Roof Frame (Wood Truss and Purlins)	bd.ft.	181.93	In Words: Pesos In Figures: Php	In Figures: Php
1003(11)a1	Fascia Board (19mm Fiber Cement Board)	m	83.20	In Words: Pesos In Figures: Php	In Figures: Php
1002(24)	Waterline Works	Ls	1.00	In Words: Pesos In Figures: Php	In Figures: Php
1201(1)	Water Pumping System	Ls	1.00	In Words: Pesos In Figures: Php	In Figures: Php
1201(8)	Water Tank (Polyethylene Water Tank - 3500L Cap.)	set	8.00	In Words: Pesos In Figures: Php	In Figures: Php
1100(10)	Conduits, Boxes and Fittings (Conduit Works/Conduit Rough-in)	Ls	1.00	In Words: Pesos In Figures: Php	In Figures: Php
1101(33)	Wires and Wiring Devices	Ls	1.00	In Words: Pesos In Figures: Php	In Figures: Php
1102(1)	Panelboard with Main & Branch Breakers	Ls	1.00	In Words: Pesos In Figures: Php	In Figures: Php
1102(18)	Solar Panel with Inverter, Battery and Other Devices	Ls	1.00	In Words: Pesos In Figures: Php	In Figures: Php
PART IV: INFRASTRUCTURE ASSETS					
IV.1 SOLAR POWERED STREET LIGHTS					
803(1)a	Structure Excavation (Foundation; Fig.)	m ³	17.00	In Words: Pesos In Figures: Php	In Figures: Php

804(1)a	Embankment from Structure Excavation (Foundation; Fig.)	m ³	12.00	In Words: Pesos In Figures: Php	In Figures: Php
900(1)c2	Structural Concrete (Fig., col.; Class A, 28 days)	m ³	8.32	In Words: Pesos In Figures: Php	In Figures: Php
902(1)b	Reinforcing Steel (Fig. Col.; G-60)	kg	653.12	In Words: Pesos In Figures: Php	In Figures: Php
903(2)	Formworks and Falseworks	m ²	115.20	In Words: Pesos In Figures: Php	In Figures: Php
1047	Structural Steel (Light post)	kg	8,063.20	In Words: Pesos In Figures: Php	In Figures: Php
1032(1)a	Painting Works (Masonry/Concrete)	m ²	57.60	In Words: Pesos In Figures: Php	In Figures: Php
1102(18)	Solar Panel with Inverter, Controller, Battery and Other Devices	l.s	1.00	In Words: Pesos In Figures: Php	In Figures: Php
IV,2 LINEAR TRENCH (DRAIN GRATE) CANAL SYSTEM					
803(1)a	Structure Excavation (Foundation; WF)	m ³	1,272.96	In Words: Pesos In Figures: Php	In Figures: Php
804(1)a	Embankment from Structure Excavation (Foundation; WF)	m ³	381.89	In Words: Pesos In Figures: Php	In Figures: Php
900(1)c2	Structural Concrete (WF, SoF; Class A, 28 days)	m ³	212.16	In Words: Pesos In Figures: Php	In Figures: Php
902(1)b	Reinforcing Steel (Fig., WF, SoF; G-60)	kg	16,654.56	In Words: Pesos In Figures: Php	In Figures: Php
1046(2)a1	CHB Load Bearing (including Reinforcing Steel, 100mmTHK)	m ³	2,828.80	In Words: Pesos In Figures: Php	In Figures: Php
1027(1)	Cement Plaster Finish	m ²	2,828.80	In Words: Pesos In Figures: Php	In Figures: Php
1047	Structural Steel (Drain Grate)	kg	54,090.06	In Words: Pesos In Figures: Php	In Figures: Php
Sub-Total for this Page					In Words: Pesos In Figures: Php

Prepared by:

Submitted by:

Name & Signature of Bidder's Representative

Proprietor / Manager & Signature

Position



Republic of the Philippines

**BANGSAMORO AUTONOMOUS REGION IN MUSLIM MINDANAO
BIDS AND AWARDS COMMITTEE
OFFICE OF THE CHIEF MINISTER**

Bangsamoro Government Center, Governor Gutierrez Avenue, Rosary Heights VII, Cotabato City 9600

Contract ID :

Contract Name :

Lot-10: CONSTRUCTION OF 400-UNITS CORE SHELTER WITH SOLAR POWERED LIGHT AND WATER SYSTEM COMPONENT, SOLAR STREET LIGHTS, AND LINEAR (DRAIN GRATE) CANAL SYSTEM: 1) 100-units Tarawakan, Bongao; 2) 50-units Buan, Panglima Sugala; 3) 50-units Tundon, Panglima Sugala; 4) 50-units Sipangkot, Sitangkai; 5) 50-units Imam Hji, Mohammad, Sibutu; 6) 50-units Panglima Mastul, Simunul; 7) 50-units Sokah Bulan, Simunul; TAWI-TAWI

Location of the Contract :

**SUMMARY OF BID PRICES
(All Parts of Bill of Quantities or BOQ)**

Instructions for completing the Summary of Bid Prices:

- 1 Enter the "Part No." for each section of the BOQ where unit prices are entered.
- 2 Enter the part description corresponding to the "Part No."
- 3 Enter the "Total Amount" in Pesos for all pages having the same "Part Description"

PART NO. / ITEM NO.	DESCRIPTION	AMOUNT (PESOS)
(1)	(2)	(3)
PART I: FACILITIES FOR THE ENGINEER		
A.1.1(8)	Provision of Field Office for the Engineer (Rental Basis)	
PART II: OTHER GENERAL REQUIREMENTS		
B.5	Project Billboard/ Signboard	
B.7(1)	Occupational Safety & Health Program	
B.9	Mobilization/Demobilization	
PART III: CIVIL, MECHANICAL, ELECTRICAL, AND SANITARY/PLUMBING WORKS		
III.1 CORE SHELTER WITH SOLAR POWERED LIGHTS		
803(1)a	Structure Excavation (Foundation; Fig., WF, TB)	
803(1)a	Structure Excavation (Septic Vault)	
804(1)a	Embankment from Structure Excavation (Foundation; Fig., WF, TB)	
900(1)c2	Structural Concrete (Fig., WF, SoF; Class A, 28 days)	
902(1)b	Reinforcing Steel (Fig., WF, SoF; G-60)	
900(1)c3	Structural Concrete (TB; Class A, 28 days)	
902(1)b	Reinforcing Steel (TB; G-60)	
900(1)c4	Structural Concrete (Col; Class A, 28 days)	
902(1)b	Reinforcing Steel (Col; G-60)	
900(1)c6	Structural Concrete (Beams / Girders; Class A, 28 days)	
902(1)b	Reinforcing Steel (Beams / Girders; G-60)	
903(2)	Formworks and Falseworks	
1046(2)a1	CHB Non Load Bearing (including Reinforcing Steel, 100mmTHK)	
1046(3)	Louver Blocks (LT; T&B and Kitchen)	
1010(2)b	Doors (0.90m x 2.10m Mahogany Panel Door - Cylinder Lockset, D-1)	
1010(1)	Frames (50mm x 125mmTHK Mahogany Door Jamb, D-1)	
1010(2)a	Doors (0.80m x 2.10m Hollow Core Flush Type Swing Door w/ Ordinary Plywood Inside and Outside, D-2)	
1010(1)	Frames (50mm x 125mmTHK Mahogany Door Jamb, D-2)	
1010(2)a	Doors (0.70m x 2.10m PVC Hollow Core Flush Type Swing Door, D-3)	

1009(1)a	Jalousie Windows (1.30mH x 0.80mW x 5mmTHK Jalousie Windows on 50x125mm Wooden Jamb w/ Clear Glass Blades, W-1)	
1009(1)a	Jalousie Windows (1.30mH x 1.60mW x 5mmTHK Jalousie Windows on 50x125mm Wooden Jamb w/ Clear Glass Blades, W-2)	
1009(1)a	Jalousie Windows (1.30mH x 2.40mW x 5mmTHK Jalousie Windows on 50x125mm Wooden Jamb w/ Clear Glass Blades, W-3)	
1027(1)	Cement Plaster Finish	
1018(2)	Unglazed Tiles (200mm x 200mm Vitrified Unglazed Tiles Floor Finish)	
1003(1)a1	Ceiling (4.5mmTHK Fiber Cement Board on Metal Ceiling Frame w/ Ceiling Vent)	
1003(2)a1	Wall (4.5mmTHK Fiber Cement Board on Metal Wall Frame, Double Wall Partition)	
1032(1)a	Painting Works (Masonry/Concrete)	
1032(1)b	Painting Works (Wood)	
1014(1)b1	Prepainted Metal Sheets (0.5mmTHK Corrugated Metal Sheets, Long Span)	
1047(2)a	Structural Steel (Steel Trusses)	
1047(2)b	Structural Steel (Purlins & Fascia Frame)	
1001(8)	Sewer Line Works (Pipes, Fittings, and Fixtures)	
1002(24)	Waterline Works	
1001(13)	Septic Vault (Polyethylene Septic Tank 1000 Lit Cap. w/ Complete Accessories)	
1100(10)	Conduits, Boxes and Fittings (Conduit Works/Conduit Rough-in)	
1101(33)	Wires and Wiring Devices	
1103(1)	Lighting Fixtures and Lamps	
1102(1)	Panelboard with Main & Branch Breakers	
1102(18)	Solar Panel with Inverter, Battery and Other Devices	
III.2 WATER SYSTEM COMPONENT		
803(1)a	Structure Excavation (Foundation; Fig. & WF)	
804(1)a	Embankment from Structure Excavation (Foundation; Fig. & WF)	
900(1)c2	Structural Concrete (Fig., WF, SoF; Class A, 28 days)	
902(1)b	Reinforcing Steel (Fig., WF, SoF; G-60)	
900(1)c4	Structural Concrete (Col.; Class A, 28 days)	
902(1)b	Reinforcing Steel (Col.; G-60)	
900(1)c6	Structural Concrete (Beams / Girders; Class A, 28 days)	
902(1)b	Reinforcing Steel (Beams / Girders; G-60)	
903(2)	Formworks and Falseworks	
1046(2)a1	CHB Non Load Bearing (including Reinforcing Steel, 100mmTHK)	
1027(1)	Cement Plaster Finish	
1032(1)a	Painting Works (Masonry/Concrete)	
1014(1)b1	Prepainted Metal Sheets (0.5mmTHK Corrugated Metal Sheets, Long Span)	
1003(5)	Roof Frame (Wood Truss and Purlins)	
1003(11)a1	Fascia Board (19mm Fiber Cement Board)	
1002(24)	Waterline Works	
1201(1)	Water Pumping System	
1201(8)	Water Tank (Polyethylene Water Tank - 3500L Cap.)	
1100(10)	Conduits, Boxes and Fittings (Conduit Works/Conduit Rough-in)	
1101(33)	Wires and Wiring Devices	
1102(1)	Panelboard with Main & Branch Breakers	
1102(18)	Solar Panel with Inverter, Battery and Other Devices	
PART IV: INFRASTRUCTURE ASSETS		
IV.1 SOLAR POWERED STREET LIGHTS		
803(1)a	Structure Excavation (Foundation; Fig.)	
804(1)a	Embankment from Structure Excavation (Foundation; Fig.)	
900(1)c2	Structural Concrete (Fig., col.; Class A, 28 days)	
902(1)b	Reinforcing Steel (Fig. Col.; G-60)	
903(2)	Formworks and Falseworks	

1047	Structural Steel (Light post)	
1032(1)a	Painting Works (Masonry/Concrete)	
1102(18)	Solar Panel with Inverter, Cotroller, Battery and Other Devices	
IV.2 LINEAR TRENCH (DRAIN GRATE) CANAL SYSTEM		
803(1)a	Structure Excavation (Foundation; WF)	
804(1)a	Embankment from Structure Excavation (Foundation; WF)	
900(1)c2	Structural Concrete (WF, SoF; Class A, 28 days)	
902(1)b	Reinforcing Steel (Fig., WF, SoF; G-60)	
1046(2)a1	CHB Load Bearing (including Reinforcing Steel, 100mmTHK)	
1027(1)	Cement Plaster Finish	
1047	Structural Steel (Drain Grate)	
Total of All Amounts in Words: Pesos		

Name : _____

Signed : _____

In capacity of : _____

Date : _____

Duly authorized to signed the Bid for and on behalf of _____

TECHNICAL AND FINANCIAL REQUIREMENTS

REQUIREMENTS	PASSED	FAILED
TECHNICAL COMPONENT		
A. Eligibility Documents		
Class "A" Documents		
<p>1. Valid PhilGEPS Registration Certificate (Platinum Membership) (all pages), or</p> <p>a) Registration certificate from Securities and Exchange Commission (SEC), Department of Trade and Industry (DTI) for sole proprietorship, or Cooperative Development Authority (CDA) for cooperatives or its equivalent document, and</p> <p>b) Mayor's or Business permit issued by the city or municipality where the principal place of business of the prospective bidder is located, or the equivalent document for Exclusive Economic Zones or Areas, and</p> <p>c) Tax clearance per E.O. No. 398, s. 2005, as finally reviewed and approved by the Bureau of Internal Revenue (BIR).</p>		
<p>b. <i>Technical Documents.</i></p> <p>2) Statement of the prospective bidder of all its ongoing government and private contracts, including contracts awarded but not yet started, if any, whether similar or not similar in nature and complexity to the contract to be bid</p>		
<p>3) Statement of the bidder's Single Largest Completed Contract (SLCC) similar to the contract to be bid, except under conditions provided under the rules.</p> <p>The SLCC should be Contract for Construction of General Building and should have at least 50% of the ABC or PHP 80,785,756.46.</p>		
<p>4) Philippine Contractors Accreditation Board (PCAB) License; or Special PCAB License in case of Joint Ventures, and registration for the type and cost of the contract to be bid</p>		
<p>5) Original copy of Bid Security. If in the form of a Surety Bond, submit also a certification issued by the Insurance Commission; or Original copy of Notarized Bid Securing Declaration</p>		
<p>6) Project Requirements, which shall include the following:</p> <p>a. Organizational chart for the contract to be bid;</p> <p>b. List of contractor's key personnel (<i>e.g.</i>, Project Manager, Project Engineers, Materials Engineers, and Foremen), to</p>		

be assigned to the contract to be bid, with their complete qualification and experience data; and c. List of contractor's major equipment units, which are owned, leased, and/or under purchase agreements, supported by proof of ownership or certification of availability of equipment from the equipment lessor/vendor for the duration of the project, as the case may be; and		
7) Original duly signed Omnibus Sworn Statement (OSS); and if applicable, Original Notarized Secretary's Certificate in case of a corporation, partnership, or cooperative; or Original Special Power of Attorney of all members of the joint venture giving full power and authority to its officer to sign the OSS and do acts to represent the Bidder.		
<i>c. Financial Requirements.</i> 8) The supplier's Audited Financial Statements, showing, among others, the Supplier's total and current assets and liabilities, stamped "received" by the BIR or its duly accredited and authorized institutions, for the preceding calendar year which should not be earlier than two (2) years from the date of bid submission		
9) The prospective bidder's computation of Net Financial Contracting Capacity (NFCC); or A committed Line of Credit from a Universal or Commercial Bank in lieu of its NFCC computation.		
Class "B" Documents, if applicable 10) If applicable, duly signed joint venture agreement (JVA) in accordance with RA No. 4566 and its IRR in case the joint venture is already in existence; or duly notarized statements from all the potential joint venture partners stating that they will enter into and abide by the provisions of the JVA in the instance that the bid is successful.		

REQUIREMENTS	PASSED	FAILED
FINANCIAL COMPONENT *Proceeded only with respect to those eligible Bidders whose first bid envelope was rated "passed".		
1) Original of duly signed and accomplished Financial Bid Form Bid Offer: _____		
2) Original of duly signed Bid Prices in the Bill of Quantities		
3) Duly accomplished Detailed Estimates Form, including a summary sheet indicating the unit prices of construction materials, labor rates, and equipment rentals used in coming up with the Bid		
4) Cash Flow by Quarter		