



Republic of the Philippines
BANGSAMORO AUTONOMOUS REGION IN MUSLIM MINDANAO
OFFICE OF THE CHIEF MINISTER
BIDS AND AWARDS COMMITTEE

Bangsamoro Government Center, Governor Gutierrez Avenue, Rosary Heights VII, Cotabato City 9600

**IN RE: COMPETITIVE PUBLIC BIDDING FOR THE
CONSTRUCTION OF SOLAR-POWERED
SEWERAGE PUMPING SYSTEM IN BRGY. FORT
PIKIT, PIKIT CLUSTER, SPECIAL GEOGRAPHIC
AREA**

ABC: PHP 23,000,000.00

IB NO.: SDF-2024-06-001

SUPPLEMENTAL BID BULLETIN NO. 2024-06-001

June 24, 2024/ Dhul-Hijjah 18, 1445 AH

Please be advised of the following clarifications and Modifications on the Bidding Documents:

SUBJECT	ORIGINAL			AMENDED		
1. List of Key Personnel (<i>Bid Data Sheet Clause 10.4</i>)	Key Personnel	General Experience	Minimum Relevant Experience	Key Personnel	General Experience	Minimum Relevant Experience
	1 Project Engineer	Construction	5 years	1 Project Engineer	Construction	5 years
	1 Safety Officer	Construction	3 years	1 Safety Officer	Construction	3 years
	1 Materials Engineer	Material Testing	3 years	1 Materials Engineer	Quality Assurance	3 years
	1 Construction Foreman	Supervision	5 years	1 Construction Foreman	Supervision	5 years
	1 Health Personnel	Construction Safety and Health	1 year	1 Health Personnel	Construction Safety and Health	1 year
				1 Master Plumber	Construction	1 year

2. Major Equipment Requirement (<i>Bid data Sheet Clause 10.5</i>)	Equipment	Minimum Specifications	Minimum Number of Units	Equipment	Minimum Specifications	Minimum Number of Units
	Bar Cutter	20 mm. capacity	1	Bar Cutter	20 mm. capacity	1
	One Bagger Mixer	4-6 cu. fit/min	1	One Bagger Mixer	4-6 cu. fit/min	1
	Bar Bender	20-mm. bending capacity	1	Bar Bender	20-mm. bending capacity	1
	Cutting Outfit	-	1	Cutting Outfit	-	1
	Backhoe	0.80 cu.m	1	Backhoe	0.80 cu.m	1
	Plate Compactor	5hp	1	Plate Compactor	5hp	1
	Dump Truck	12 cu. yd	1	Dump Truck	12 cu. yd	2
	Drilling Equipment w/ Gen Set	-	1	Drilling Equipment w/ Gen Set	-	1
	3. Section VI. Specifications	<u>See Annex "A"</u>				
4. Section VII. Drawings	<u>See Annex "B"</u>					
5. Section VIII. Bill of Quantities	<u>See Annex "C"</u>					

This Supplemental/Bid Bulletin is issued to modify or amend the corresponding items in the Bidding Documents.

For guidance and information of all concerned.

Signed

MOHD ASNIN K. PENDATUN

Chairperson, Special Bids and Awards Committee

ANNEX "A"

Revised Technical Specifications

INTRODUCTION

The Drawings and Specifications are complementary to each other. Drawings are graphic means of showing work to be done. They are particularly suited to showing where materials are located. Thus, drawings exist essentially to show dimension, location and placement. Not all works, however, can be presented in the drawings. Generalized works are usually statement form and hence, the contractor is required to read the specifications carefully.

Specifications, on the other hand, are used to describe the materials, construction techniques, samples, shop drawings, guarantees and other contract requirements. Together, the drawings and the specifications are used to inform the contractor. In cases where the specified brand carries with it the manufacturer's specifications, the manufacturer's specifications shall hold precedence over these specifications.

The Specifications are of the abbreviated type and include incomplete sentences. The selection of the sentence depends on the underlying principles of Specifications:

1. That the Technical Specifications are only one part of the Contract Documents.
2. That the Contract is between the Procuring Entity and the General Contractor and
3. That the General Contractor is the only party responsible for completing the work in accordance with the Contract Documents.

Therefore:

1. Only the General Contractor is referred to in the Specifications so as not to violate the intent of the contract and so as not to undermine the proper chain of command.
2. Any reference to Specialty Trade Contractors in the technical Specifications is made only in so far as selection of Specialty Trade Contractors is made through bidding. Once the Specialty Trade Contractors are selected and assigned to the General Contractor, the General Contractor assumes all the responsibilities for the execution of the whole project in accordance with the Contract Documents. Therefore, in the contract between the Owner and the General Contractor, the Specialty Trade Contractor is not referred to. In all contract Documents, the word "Contractor" means the General Contractor.
4. The omission of the phrase "The Contractor shall" is intentional because the whole Specifications is directed to the Contractor. Omitted words or phrases shall be supplied by inference in the same manner as they are when a "note" occurs on the drawings.
5. Where "as shown", "as indicated", "as detailed" or words of similar import are used, it shall be understood that reference to the drawings accompanying the Specifications is made unless otherwise stated.
6. Where "as directed", "as required", "as permitted", "as authorized", "as approved, accepted" or words of similar import as used, it shall be understood that the direction, requirements, permission, authorization, approval or acceptance of the Architect is intended unless otherwise stated.

7. As used herein, “provided” shall be understood to mean “provided complete in place,” that is, “furnished and installed”.
8. Most sentences are in the imperative mood. This style is especially suited for instructions covering installation of products and equipment.

CLARIFICATIONS

All reference to any brand, material, equipment, or systems in the Specifications, plans, and bid documents is indicative of the type and quality of what is required. However, any equal material, equipment, or system can be used.

The list of items of work provided in the scope of works does not in any way limit the responsibility of the Contractor to perform all other works necessary for the completion of the

A. GENERAL CONDITIONS DESCRIPTION OF THE PROJECT

Complete all works for the Construction of Fort Pikit Hybrid Solar-Powered Sewerage Pumping System in Brgy. Fort Pikit, Pikit Cluster, Special Geographic Area, including supply of all materials, equipment, and systems, as well as the performance of all necessary labor and processes, in accordance with the plans, specifications, Bidding Documents, and other related contract documents.

The contractor is not limited to the scope of works listed. They should verify all plans and actual conditions for the necessity of work. If the actual situation calls for demolition, removal, and relocation, he shall include such and all concomitant works to finish as part of the scope of work.

Any discrepancies found between the drawings and specifications and the site conditions or any errors or omissions in the drawings or specifications should be clarified with the Engineer from the Procuring entity.

Should the contractor fail to verify or clarify discrepancies, errors, conflicts, or omissions in the drawings and specifications, it shall be deemed that the contractor has included in the preparation of his bid the necessary works, materials, or items needed to satisfy the general scope of works.

B. SCOPE OF WORKS:

Enumerated below are some of the works expected from the contractor. Therefore, the scope is not limited to what has only been written below, some works are implied and expected. The objective of the project must be met by the implementing contractor before the project may be turned over to the OCM-ISS.

1. Permits and Clearances

- a. Secure and pay all permits (application and obtaining of Building Permit and all other implied permits needed, Fire Clearance, and Certificate of Occupancy, if applicable), fees, licenses, taxes, tests, etc. necessary for the execution of the general construction works.
- b. Prepare a monthly progress report which shall include an overall progress chart based on actual physical accomplishment of construction work and a progress chart based on actual value of accomplished construction work, among others.

- c. Miscellaneous Fees (Notary, Blueprint, processing requirements, and other fees)

2. Mobilization and Temporary Facilities

- a. Mobilization of all necessary personnel, labor, tools, facilities, and equipment to commence work on the project.
- b. Setting up of Temporary Facilities within the site.
- c. Preparation of logistics of contractor's equipment.
- d. Setting up of necessary water and power lines required for the Project.
- e. Provision of security and safety measures for the protection of the general public during construction work.
- f. Setting up any safety measure equipment or temporary structures such as bunk houses, tarps, signs, etc.

3. Concrete/Masonry Works

- a. Concreting of canals, catch basins, riprap, and other structures as specified in the plans.
- b. Provision of reinforcing bars for canals, catch basins, and other structures as specified in the plans.
- c. Provision of formworks for all concrete works
- d. Laying of CHB, and mortar and filler, as specified in the plans and specifications

4. Doors and Windows

- a. DOORS: Provide and install all doors with complete locksets, hinges, and accessories. See Schedule of Doors.
- b. WINDOWS: Provide and install all windows with complete locksets, hinges, and accessories. See Schedule of Windows.

5. Electrical Works

- a. Provide labor, materials, tools, machinery, equipment, and services necessary to complete the Electrical Work under the Contract. All systems and equipment shall be complete in every aspect and all items of material, equipment shall be provided for a fully operational system and ready for use. Coordinate the work with the work of the other trades in order to resolve all conflicts without impeding the job progress.
- b. Provide all materials, and equipment and perform all the work necessary for the complete execution of all the Electrical and Auxiliary Works as shown in the Drawings and Specifications, as herein specified or both except as otherwise excluded, and which, without excluding generality of the foregoing shall include but not limited to the following principal items of work:
 - 1. Electrical demolition for remodeling.
 - 2. Supply and installation of electrical wiring, conduit, raceway system, including necessary hanger/supports.
 - 3. Supply and installation of lighting fixtures/luminaries.

4. Supply and installation of complete electrical and auxiliary wiring devices.
 5. Testing of all installations.
 6. Painting of electrical equipment, boxes, enclosures, metal conduits, and hangers/supports.
 7. Sample Approvals.
- c. All materials and supplies shall be new and shall conform to the provisions of the latest editions of the following standards:
1. Underwriters Laboratories, Inc. (UL)
 2. National Electrical Manufacturer's Association (NEMA)
 3. Philippine Electrical Code (PEC)
- d. All materials on all systems shall comply with the following specifications unless specifically exempted, and all materials that were not specified shall be of the best of their respective kind. All electrical equipment, appliances, fixtures, and devices shall be the latest of the current year in design, material, and workmanship, and shall be the type or model called for in these Specifications. Samples of any material shall be submitted for approval as required by the Engineers prior to purchase and installation.

6. Painting Works

- a. Painting of white paint on all walls and ceilings using solvent-based paint as the final layer. At least 3 layers of paint are to be applied.
- b. Putting necessary materials or solutions on ceilings to beautify and to make them useful.

7. Pipeline Works

- a. Supply, delivery, and installation of materials for the Pipeline Works as specified in the plans.

8. Pumping Works

- a. Supply, delivery, and installation of materials for the Pumping Works as specified in the plans.

9. Demobilization

- a. Demobilize, dismantle and remove all temporary facilities, including all workmen's houses, construction equipment, tools, personnel and debris out of the project site and premise
- b. Cleaning of the building and site to a spic and span state, ready for use.
- c. Restoration of all possible damaged facilities during the renovation phase.

C. OTHERS

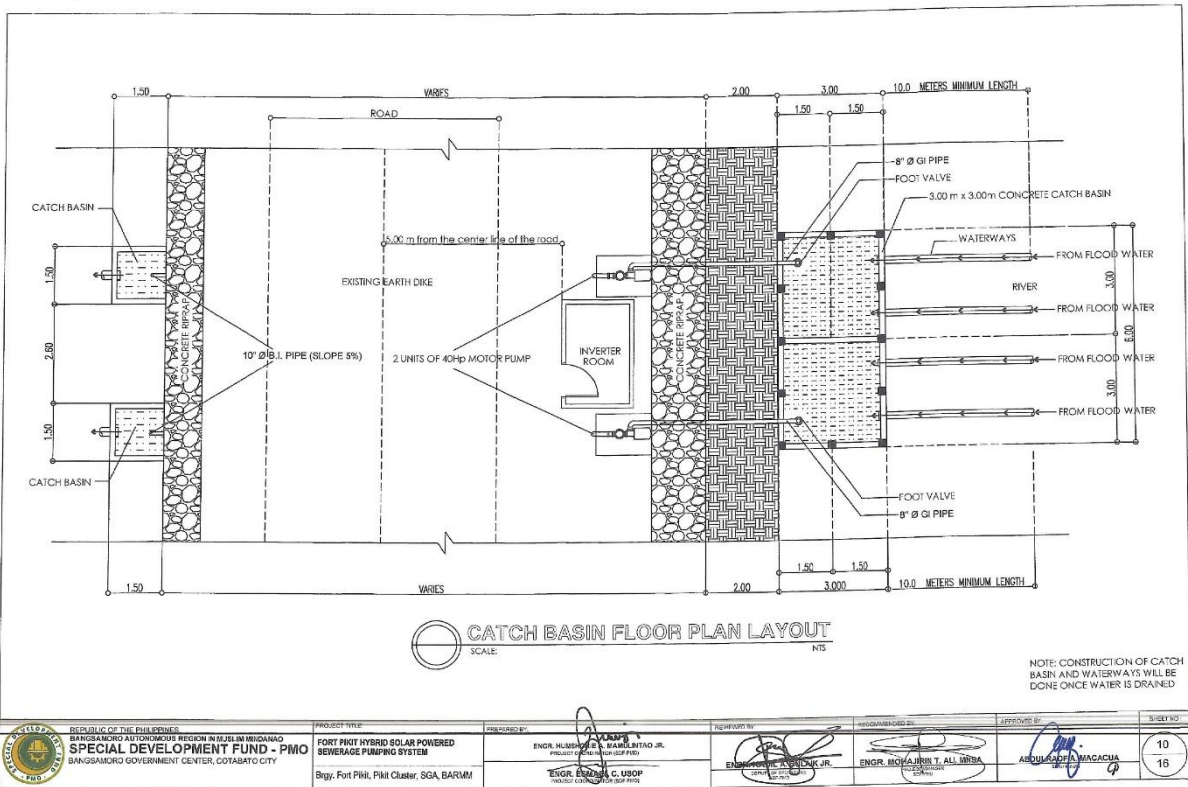
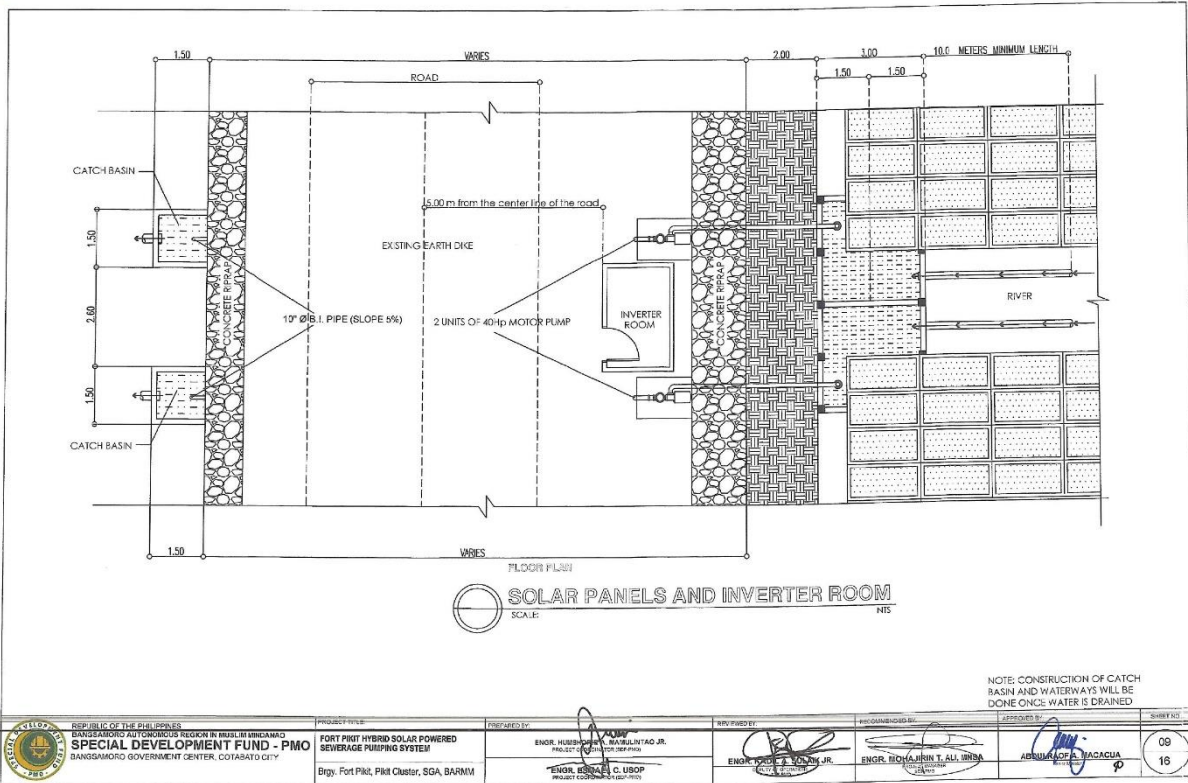
- The Contractor must have a Project Engineer who will supervise the project onsite. The Contractor shall inform SDF-PMO in case of replacement/changes of personnel assigned at the project site. The replacement must have relevant qualifications and abilities equal to or better than those of the personnel as evidenced by his/her training certification to be submitted to SDF-PMO.

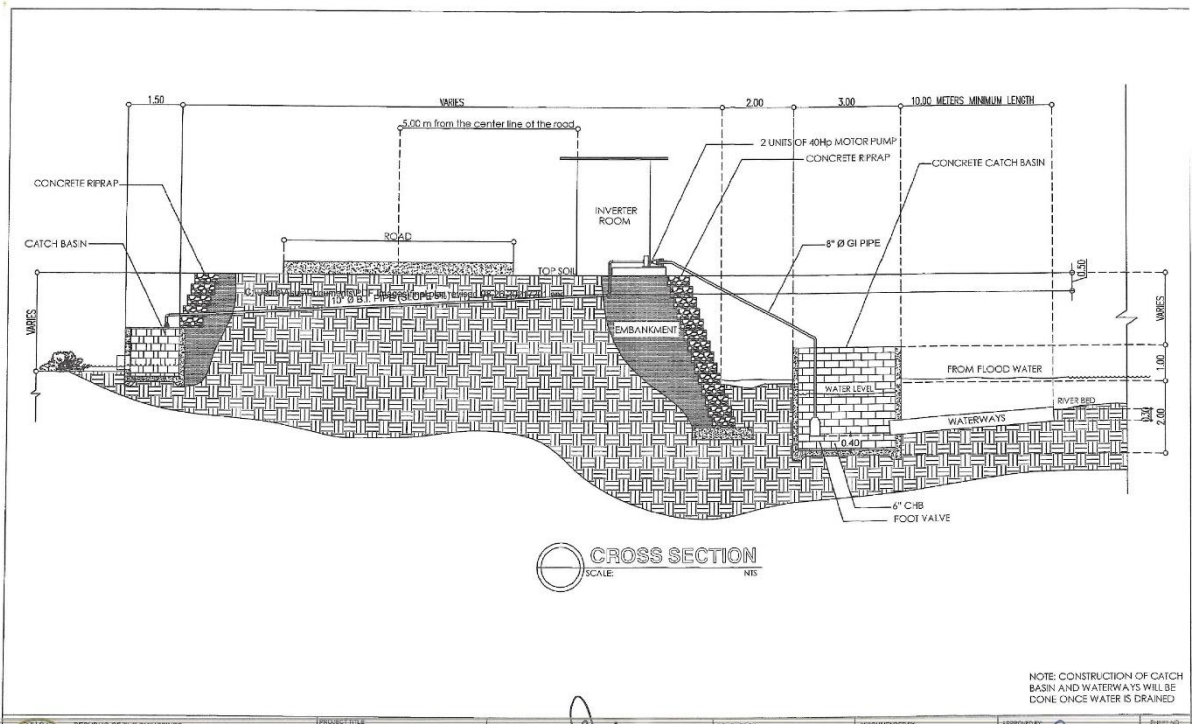
- Demolitions and repairs due to the Contractor's fault shall be done by the Contractor without extra compensation to the Owner.
- As soon as the project is satisfactorily inspected and it conforms to the plans and specifications, the contractor shall submit to the procuring entity a written notice that said project is completed and is subject to the latter's approval.
- Five copies of As-Built Plan must be submitted not later than 7 days after project completion.

D. SPECIFICATIONS

All drawings, small scale, and detail drawings are intended to collaborate with the specifications and to form part thereof, where figures are given, they are to be followed in preference to measurement by scale. Anything shown in the drawings and not mentioned in the specifications or vice-versa, or anything not expressly outlined in either, but which is reasonably implied shall be furnished and installed as thought specifically shown in mentioned both.

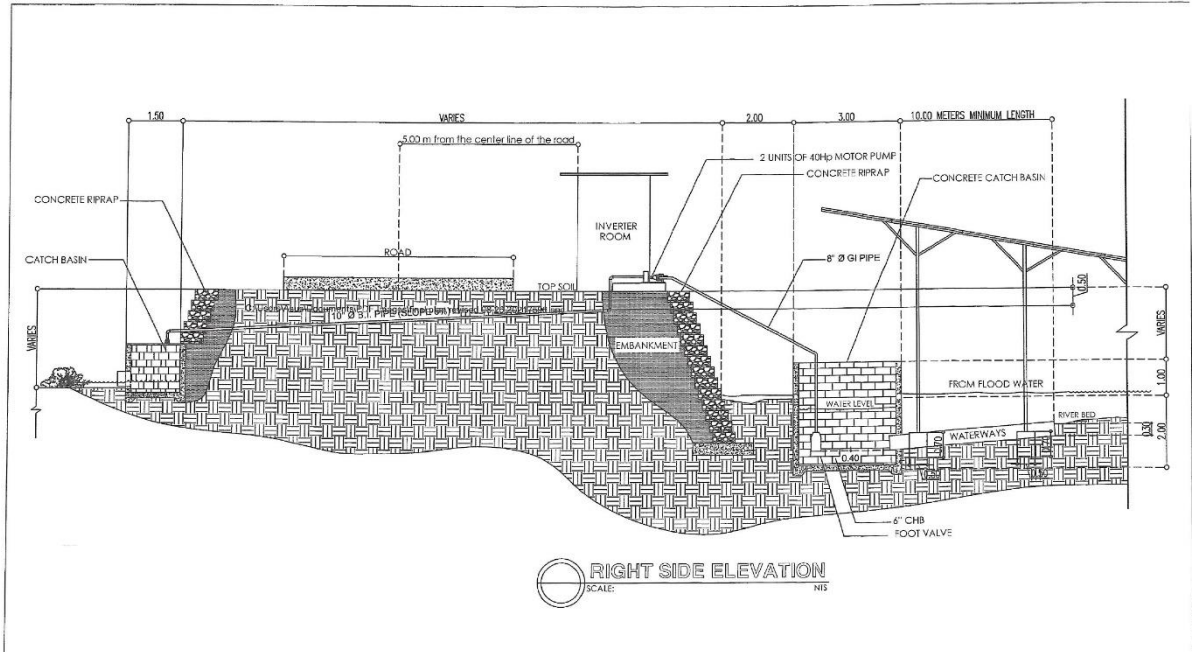
Annex "B"





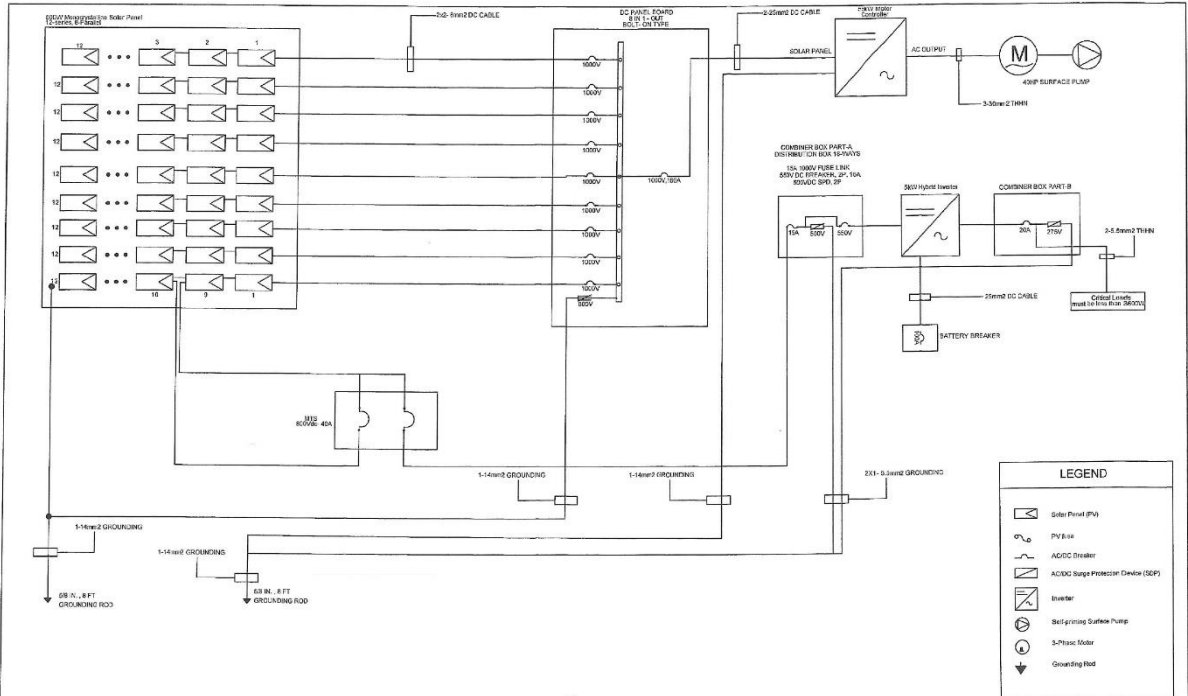
CROSS SECTION
SCALE: NIS

REPUBLIC OF THE PHILIPPINES DEPARTMENT OF PUBLIC WORKS AND HIGHWAYS SPECIAL DEVELOPMENT FUND - PMO BANGSAMORO GOVERNMENT CENTER, COTABATO CITY	PROJECT TITLE FORT PIKIT HYBRID SOLAR POWERED SEWERAGE PUMPING SYSTEM	PREPARED BY ENGR. HUMBERTO M. MARULINTAO JR. <small>REGISTERED PROFESSIONAL ENGINEER (CEP/CEP/PMO)</small>	REVIEWED BY ENGR. EMANUEL C. USOP <small>REGISTERED PROFESSIONAL ENGINEER (CEP/CEP/PMO)</small>	RECOMMENDED BY ENGR. MOHAMMAD T. ALLINSUA <small>REGISTERED PROFESSIONAL ENGINEER (CEP/CEP/PMO)</small>	APPROVED BY ABDURROBBIL MACACUA <small>REGISTERED PROFESSIONAL ENGINEER (CEP/CEP/PMO)</small>	SHEET NO. 11 16
	Brgy. Fort Pikit, Pikit Cluster, SGA, BARMM					

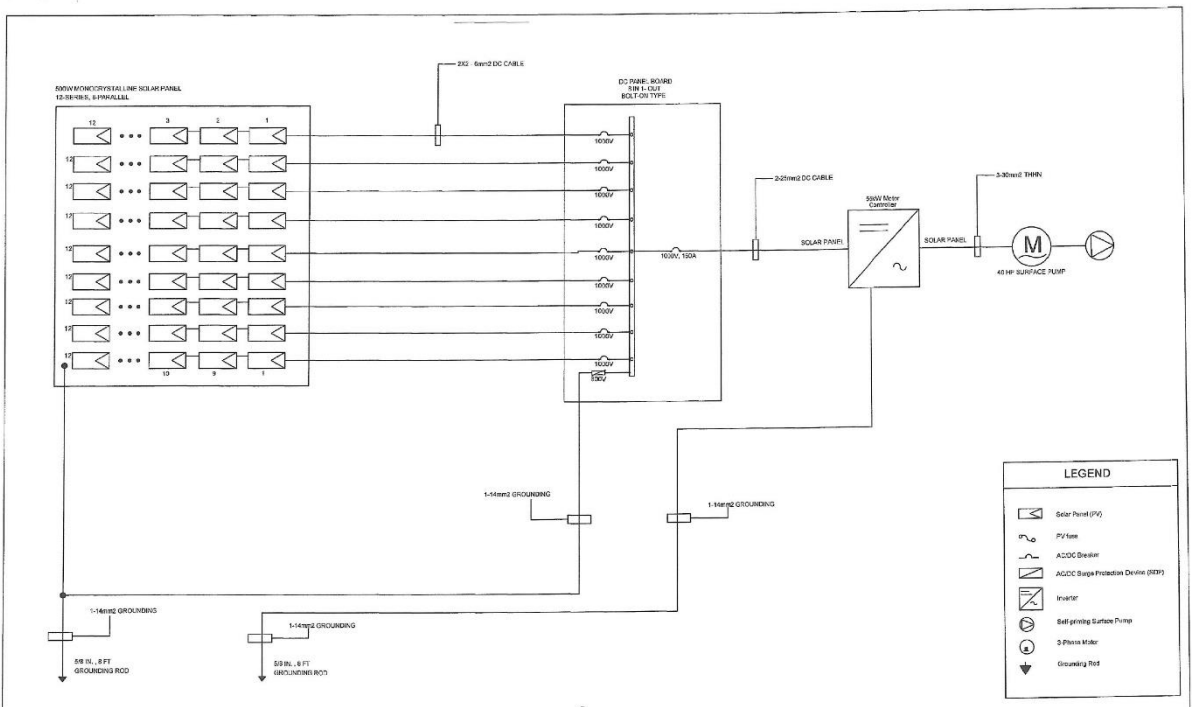


RIGHT SIDE ELEVATION
SCALE: NIS

REPUBLIC OF THE PHILIPPINES DEPARTMENT OF PUBLIC WORKS AND HIGHWAYS SPECIAL DEVELOPMENT FUND - PMO BANGSAMORO GOVERNMENT CENTER, COTABATO CITY	PROJECT TITLE FORT PIKIT HYBRID SOLAR POWERED SEWERAGE PUMPING SYSTEM	PREPARED BY ENGR. HUMBERTO M. MARULINTAO JR. <small>REGISTERED PROFESSIONAL ENGINEER (CEP/CEP/PMO)</small>	REVIEWED BY ENGR. EMANUEL C. USOP <small>REGISTERED PROFESSIONAL ENGINEER (CEP/CEP/PMO)</small>	RECOMMENDED BY ENGR. MOHAMMAD T. ALLINSUA <small>REGISTERED PROFESSIONAL ENGINEER (CEP/CEP/PMO)</small>	APPROVED BY ABDURROBBIL MACACUA <small>REGISTERED PROFESSIONAL ENGINEER (CEP/CEP/PMO)</small>	SHEET NO. 12 16
	Brgy. Fort Pikit, Pikit Cluster, SGA, BARMM					



	REPUBLIC OF THE PHILIPPINES BANGSAMORO AUTONOMOUS REGIONITY DEVELOPMENT SPECIAL DEVELOPMENT FUND - PMO BANGSAMORO GOVERNMENT CENTER, COTABATO CITY	PROJECT TITLE FORT PIKIT HYBRID SOLAR POWERED SEWERAGE PUMPING SYSTEM Brgy. Fort Pikit, Pikit Cluster, SGA, BARMM	PREPARED BY ENGR. HUBERTO A. MARULINTAO JR. <small>PROJECT DESIGNER (ELECTRICAL)</small>	REVIEWED BY ENGR. RAFAEL S. JAKAJAK JR. <small>PROJECT DESIGNER (ELECTRICAL)</small>	RECOMMENDED BY ENGR. MOHAMMAD T. ALI UMBA <small>PROJECT DESIGNER (ELECTRICAL)</small>	APPROVED BY ABULKADAF A. MACACUA <small>PROJECT DESIGNER (ELECTRICAL)</small>	SHEET NO. 13
			ENGR. ENRIQUE C. USOP <small>PROJECT DESIGNER (ELECTRICAL)</small>	ENGR. MOHAMMAD T. ALI UMBA <small>PROJECT DESIGNER (ELECTRICAL)</small>	ABULKADAF A. MACACUA <small>PROJECT DESIGNER (ELECTRICAL)</small>	16	



	REPUBLIC OF THE PHILIPPINES BANGSAMORO AUTONOMOUS REGIONITY DEVELOPMENT SPECIAL DEVELOPMENT FUND - PMO BANGSAMORO GOVERNMENT CENTER, COTABATO CITY	PROJECT TITLE FORT PIKIT HYBRID SOLAR POWERED SEWERAGE PUMPING SYSTEM Brgy. Fort Pikit, Pikit Cluster, SGA, BARMM	PREPARED BY ENGR. HUBERTO A. MARULINTAO JR. <small>PROJECT DESIGNER (ELECTRICAL)</small>	REVIEWED BY ENGR. RAFAEL S. JAKAJAK JR. <small>PROJECT DESIGNER (ELECTRICAL)</small>	RECOMMENDED BY ENGR. MOHAMMAD T. ALI UMBA <small>PROJECT DESIGNER (ELECTRICAL)</small>	APPROVED BY ABULKADAF A. MACACUA <small>PROJECT DESIGNER (ELECTRICAL)</small>	SHEET NO. 14
			ENGR. ENRIQUE C. USOP <small>PROJECT DESIGNER (ELECTRICAL)</small>	ENGR. MOHAMMAD T. ALI UMBA <small>PROJECT DESIGNER (ELECTRICAL)</small>	ABULKADAF A. MACACUA <small>PROJECT DESIGNER (ELECTRICAL)</small>	16	

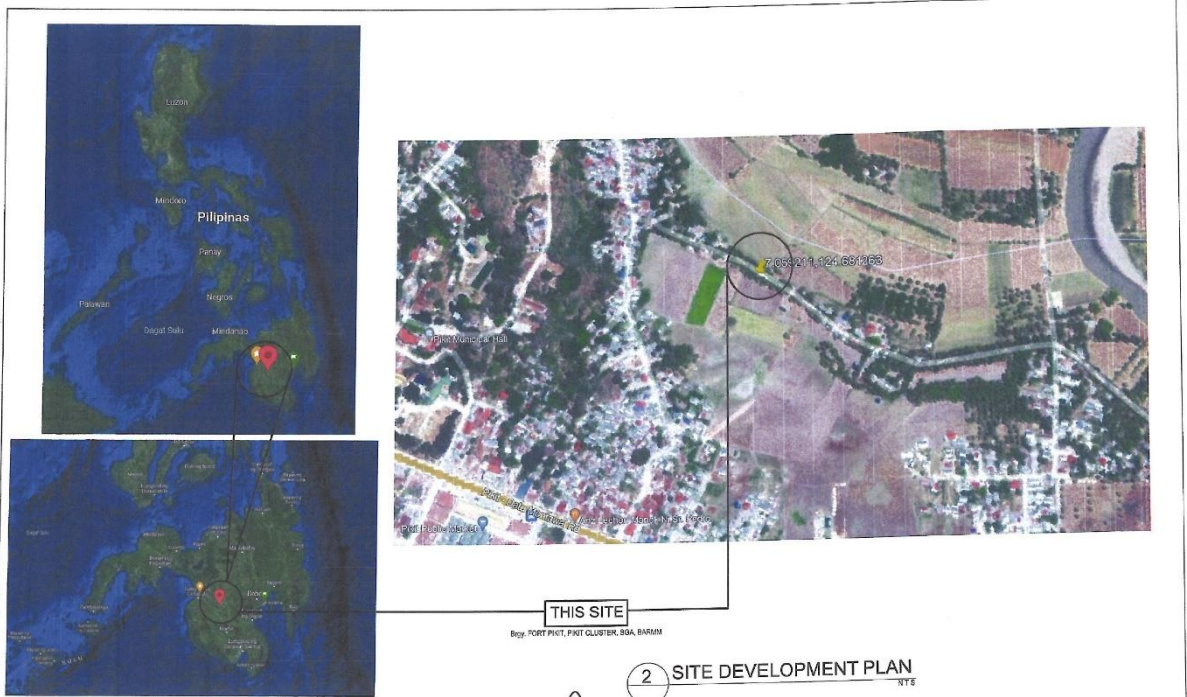


REPUBLIC OF THE PHILIPPINES
BANGSAMORO AUTONOMOUS REGION IN MUSLIM MINDANAO
SPECIAL DEVELOPMENT FUND - PROJECT MANAGEMENT OFFICE
 BANGSAMORO GOVERNMENT CENTER, COTABATO CITY



FORT PIKIT HYBRID SOLAR POWERED SEWERAGE PUMPING SYSTEM
 Brgy. FORT PIKIT, PIKIT CLUSTER, SGA, BARMM

REPUBLIC OF THE PHILIPPINES BANGSAMORO AUTONOMOUS REGION IN MUSLIM MINDANAO SPECIAL DEVELOPMENT FUND - PMO BANGSAMORO GOVERNMENT CENTER, COTABATO CITY	PROJECT TITLE: FORT PIKIT HYBRID SOLAR POWERED SEWERAGE PUMPING SYSTEM Brgy. Fort Pikit, Pikit Cluster, SGA, BARMM	PREPARED BY: ENGR. HUMBERTO A. RAMULINTAO JR. PROJECT ENGINEER (PE)	REVIEWED BY: ENGR. MOHAMMAD T. ALLIENSA PROJECT SUPERVISOR (PS)	APPROVED BY: ENGR. ESABEL C. USOP PROJECT COORDINATOR (PC)	AFFILIATION: ABU MANOFA MACAGUA 	SHEET NO. 01 16



REPUBLIC OF THE PHILIPPINES BANGSAMORO AUTONOMOUS REGION IN MUSLIM MINDANAO SPECIAL DEVELOPMENT FUND - PMO BANGSAMORO GOVERNMENT CENTER, COTABATO CITY	PROJECT TITLE: FORT PIKIT HYBRID SOLAR POWERED SEWERAGE PUMPING SYSTEM Brgy. Fort Pikit, Pikit Cluster, SGA, BARMM	PREPARED BY: ENGR. HUMBERTO A. RAMULINTAO JR. PROJECT ENGINEER (PE)	REVIEWED BY: ENGR. MOHAMMAD T. ALLIENSA PROJECT SUPERVISOR (PS)	APPROVED BY: ENGR. ESABEL C. USOP PROJECT COORDINATOR (PC)	AFFILIATION: ABU MANOFA MACAGUA 	SHEET NO. 02 16



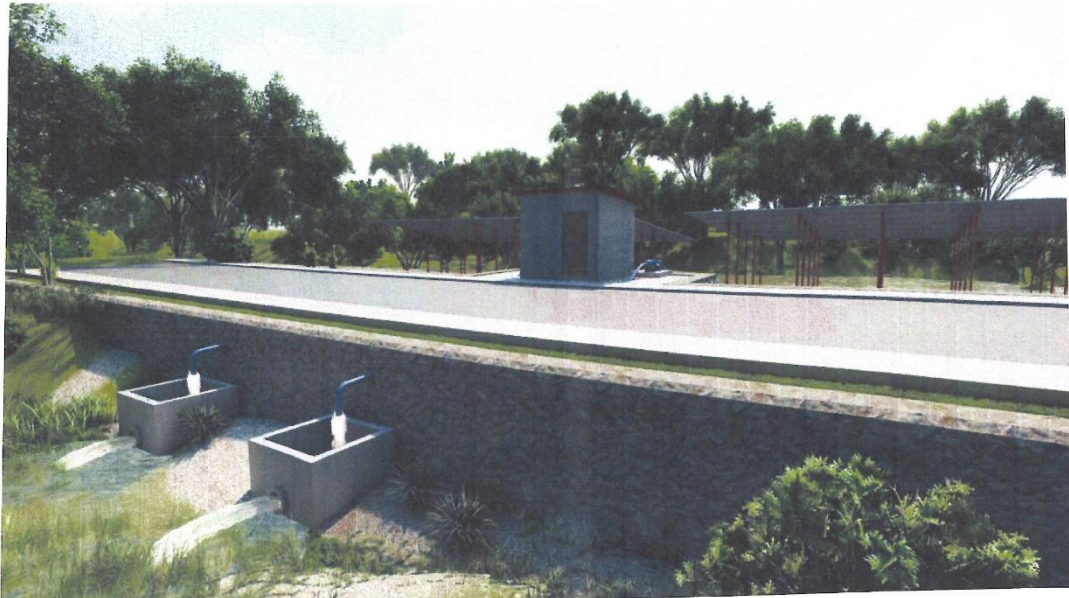
PERSPECTIVE

REPUBLIC OF THE PHILIPPINES DEPARTMENT OF PUBLIC WORKS AND HIGHWAYS SPECIAL DEVELOPMENT FUND - PMO BANGSAMORO GOVERNMENT CENTER, COTABATO CITY	PROJECT TITLE: FORT PIKIT HYBRID SOLAR POWERED SEWERAGE PUMPING SYSTEM	PREPARED BY: ENGR. FLORIAN A. MARULINTAO JR. <small>PROJECT ENGINEER</small>	REVIEWED BY: ENGR. FLORIAN A. MARULINTAO JR. <small>PROJECT ENGINEER</small>	CHECKED BY: ENGR. MOHAMMAD T. ALLI MNSA <small>PROJECT ENGINEER</small>	APPROVED BY: ABDULLAH A. YACAGUA <small>PROJECT ENGINEER</small>	SHEET NO. 03 16
	Brgy. Fort Pikit, Pikit Cluster, SGA, BARMU	ENGR. EMMANUEL USOP <small>PROJECT ENGINEER</small>	ENGR. FLORIAN A. MARULINTAO JR. <small>PROJECT ENGINEER</small>	ENGR. MOHAMMAD T. ALLI MNSA <small>PROJECT ENGINEER</small>	ABDULLAH A. YACAGUA <small>PROJECT ENGINEER</small>	



PERSPECTIVE

REPUBLIC OF THE PHILIPPINES DEPARTMENT OF PUBLIC WORKS AND HIGHWAYS SPECIAL DEVELOPMENT FUND - PMO BANGSAMORO GOVERNMENT CENTER, COTABATO CITY	PROJECT TITLE: FORT PIKIT HYBRID SOLAR POWERED SEWERAGE PUMPING SYSTEM	PREPARED BY: ENGR. FLORIAN A. MARULINTAO JR. <small>PROJECT ENGINEER</small>	REVIEWED BY: ENGR. FLORIAN A. MARULINTAO JR. <small>PROJECT ENGINEER</small>	CHECKED BY: ENGR. MOHAMMAD T. ALLI MNSA <small>PROJECT ENGINEER</small>	APPROVED BY: ABDULLAH A. YACAGUA <small>PROJECT ENGINEER</small>	SHEET NO. 04 16
	Brgy. Fort Pikit, Pikit Cluster, SGA, BARMU	ENGR. EMMANUEL USOP <small>PROJECT ENGINEER</small>	ENGR. FLORIAN A. MARULINTAO JR. <small>PROJECT ENGINEER</small>	ENGR. MOHAMMAD T. ALLI MNSA <small>PROJECT ENGINEER</small>	ABDULLAH A. YACAGUA <small>PROJECT ENGINEER</small>	



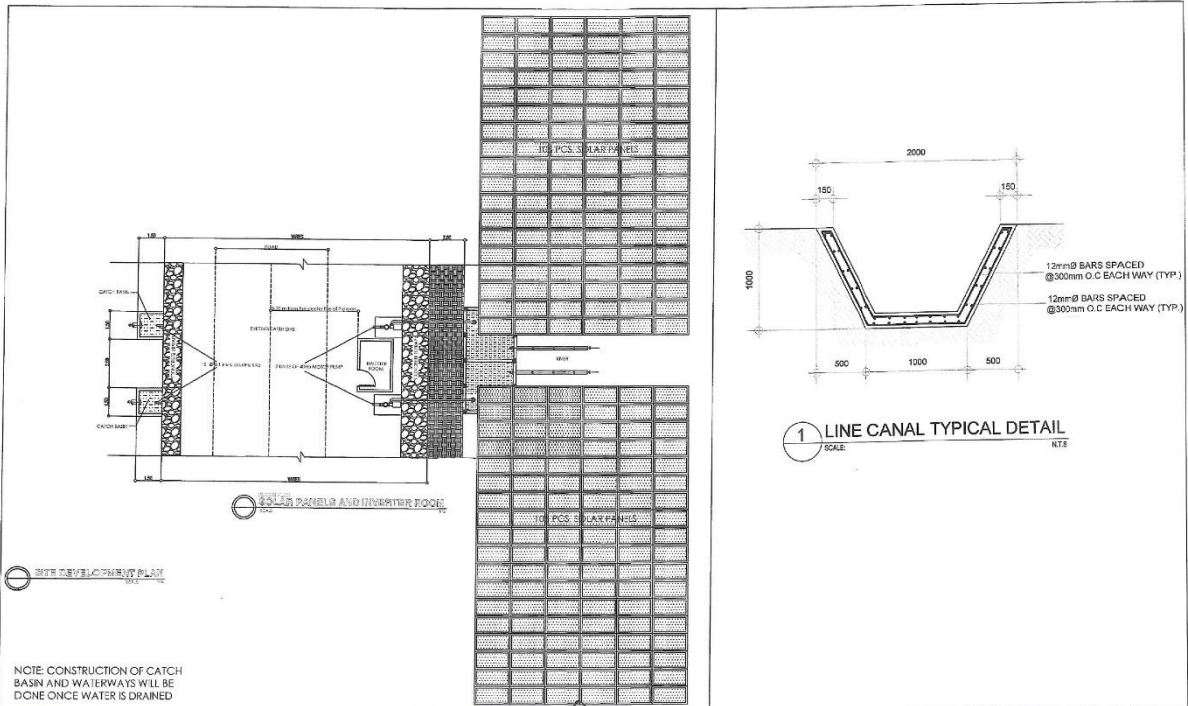
PERSPECTIVE

REPUBLIC OF THE PHILIPPINES BANGSANGKAPAYAN (KAWALANAN) BUDGETARY MANAGEMENT SYSTEM SPECIAL DEVELOPMENT FUND - PMO BANGSAMORO GOVERNMENT CENTER, COTABATO CITY	PROJECT TITLE	PREPARED BY	REVIEWED BY	RECOMMENDED BY	APPROVED BY	SHEET NO.
	FORT PINT HYBRID SOLAR POWERED SEWERAGE PUMPING SYSTEM Brgy. Fort Pint, PIM Cluster, SGA, BARMM	ENGR. HUMBERTO A. MAHILINTAO JR. <small>REGISTERED PROFESSIONAL ENGINEER</small> ENGR. ESTRELLA C. USOP <small>REGISTERED PROFESSIONAL ENGINEER</small>	ENGR. ERIC A. BULAK JR. <small>REGISTERED PROFESSIONAL ENGINEER</small>	ENGR. MOHARIN T. ALLINSA <small>REGISTERED PROFESSIONAL ENGINEER</small>	ABULKADIR M. MACAGUL <small>REGISTERED PROFESSIONAL ENGINEER</small>	



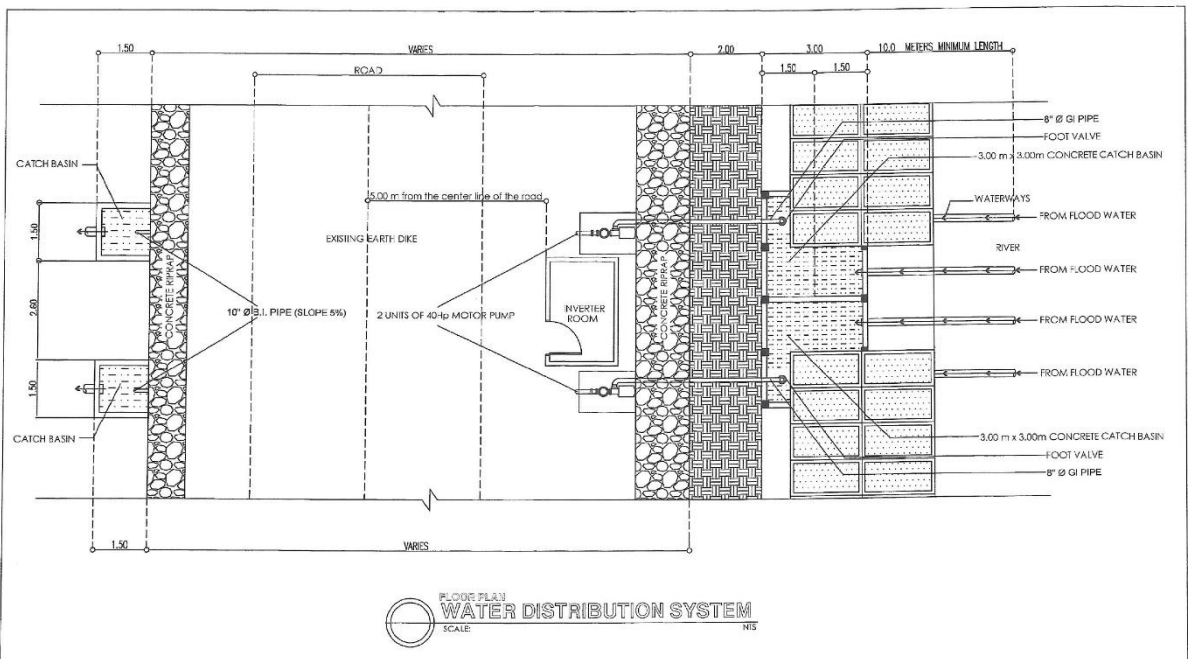
PERSPECTIVE

REPUBLIC OF THE PHILIPPINES BANGSANGKAPAYAN (KAWALANAN) BUDGETARY MANAGEMENT SYSTEM SPECIAL DEVELOPMENT FUND - PMO BANGSAMORO GOVERNMENT CENTER, COTABATO CITY	PROJECT TITLE	PREPARED BY	REVIEWED BY	RECOMMENDED BY	APPROVED BY	SHEET NO.
	FORT PINT HYBRID SOLAR POWERED SEWERAGE PUMPING SYSTEM Brgy. Fort Pint, PIM Cluster, SGA, BARMM	ENGR. HUMBERTO A. MAHILINTAO JR. <small>REGISTERED PROFESSIONAL ENGINEER</small> ENGR. ESTRELLA C. USOP <small>REGISTERED PROFESSIONAL ENGINEER</small>	ENGR. ERIC A. BULAK JR. <small>REGISTERED PROFESSIONAL ENGINEER</small>	ENGR. MOHARIN T. ALLINSA <small>REGISTERED PROFESSIONAL ENGINEER</small>	ABULKADIR M. MACAGUL <small>REGISTERED PROFESSIONAL ENGINEER</small>	



NOTE: CONSTRUCTION OF CATCH BASIN AND WATERWAYS WILL BE DONE ONCE WATER IS DRAINED

REPUBLIC OF THE PHILIPPINES SPECIAL DEVELOPMENT FUND - PMO BANGSAMORO GOVERNMENT CENTER, COTABATO CITY	PROJECT TITLE: FORT PIKIT HYBRID SOLAR POWERED SEWERAGE PUMPING SYSTEM	PREPARED BY: ENGR. HIBSAJAH T. MANILA INTAQ JR. <small>PROJECT CHIEF / CONSULTANT</small>	REVIEWED BY: ENGR. ERIC M. L. USOP <small>PROJECT CHIEF / CONSULTANT</small>	RECOMMENDED BY: ENGR. MOHAMMAD T. ALLI UNSA <small>PROJECT CHIEF / CONSULTANT</small>	APPROVED BY: ABDULLAH A. MACAGUA <small>PROJECT CHIEF / CONSULTANT</small>	SHEET NO.: 07 16
	PROJECT SITE: Brgy. Fort Pikit, Pikit Cluster, SGA, BARMM					



REPUBLIC OF THE PHILIPPINES SPECIAL DEVELOPMENT FUND - PMO BANGSAMORO GOVERNMENT CENTER, COTABATO CITY	PROJECT TITLE: FORT PIKIT HYBRID SOLAR POWERED SEWERAGE PUMPING SYSTEM	PREPARED BY: ENGR. HIBSAJAH T. MANILA INTAQ JR. <small>PROJECT CHIEF / CONSULTANT</small>	REVIEWED BY: ENGR. ERIC M. L. USOP <small>PROJECT CHIEF / CONSULTANT</small>	RECOMMENDED BY: ENGR. MOHAMMAD T. ALLI UNSA <small>PROJECT CHIEF / CONSULTANT</small>	APPROVED BY: ABDULLAH A. MACAGUA <small>PROJECT CHIEF / CONSULTANT</small>	SHEET NO.: 08 16
	PROJECT SITE: Brgy. Fort Pikit, Pikit Cluster, SGA, BARMM					

Annex “C”

Section VIII. Bill of Quantities

Contract Name: Construction of Fort Pikit Hybrid Solar-Powered Sewerage Pumping System

Location of the Contract: Brgy. Fort Pikit, Pikit Cluster, SGA, BARMM

ITEM NO.	DESCRIPTION	UNIT	QUANTITY	UNIT PRICE (Pesos)	AMOUNT (Pesos)
(1)	(2)	(3)	(4)	(5)	(6)
PART I. FACILITIES FOR THE ENGINEER					
A.1.1(8)	Provision of Field Office for the Engineer (Rental Basis)	mo.	1.00	In Words: Pesos: _____ _____ _____ In Figures: _____	In Words: Pesos: _____ _____ _____ In Figures: _____
PART II. OTHER GENERAL REQUIREMENTS					
B.3	Permits and Clearances	l.s.	1.00	In Words: Pesos: _____ _____ _____ In Figures: _____	In Words: Pesos: _____ _____ _____ In Figures: _____
B.5	Project Billboard/Signboard	each	3.00	In Words: Pesos: _____ _____ _____ In Figures: _____	In Words: Pesos: _____ _____ _____ In Figures: _____
B.7.5	Occupational Safety and Health Program	l.s.	1.00	In Words: Pesos: _____ _____ _____ In Figures: _____	In Words: Pesos: _____ _____ _____ In Figures: _____
B.6.1	Mobilization /Demobilization	l.s.	1.00	In Words: Pesos: _____ _____ _____ In Figures: _____	In Words: Pesos: _____ _____ _____ In Figures: _____

PART III. CIVIL, MECHANICAL, ELECTRICAL AND PLUMBING WORKS

500(3)b2	Line Canal (V-shape/Concrete)	lot	1.00	In Words: Pesos: _____ _____ _____ In Figures: _____	In Words: Pesos: _____ _____ _____ In Figures: _____
803(1)a	Structure Excavation (Common Soil)	cu. m.	330.00	In Words: Pesos: _____ _____ _____ In Figures: _____	In Words: Pesos: _____ _____ _____ In Figures: _____
1001(6)	Catch Basin (Concrete/CHB)	lot	1.00	In Words: Pesos: _____ _____ _____ In Figures: _____	In Words: Pesos: _____ _____ _____ In Figures: _____
SPL 1	Installation of PV Panel Module	lot	1.00	In Words: Pesos: _____ _____ _____ In Figures: _____	In Words: Pesos: _____ _____ _____ In Figures: _____
SPL 2	Solar Water Pump	lot	1.00	In Words: Pesos: _____ _____ _____ In Figures: _____	In Words: Pesos: _____ _____ _____ In Figures: _____
SPL 3	Fabrication and Installation of Solar Panel Frames	lot	1.00	In Words: Pesos: _____ _____ _____ In Figures: _____	In Words: Pesos: _____ _____ _____ In Figures: _____
SPL 4	Construction of Inverter Room	lot	1.00	In Words: Pesos: _____ _____ _____ In Figures: _____	In Words: Pesos: _____ _____ _____ In Figures: _____
SPL 5	Construction of Perimeter Fence	lot	1.00	In Words: Pesos: _____ _____ _____ In Figures: _____	In Words: Pesos: _____ _____ _____ In Figures: _____

				In Figures: _____	In Figures: _____
SPL 6	Installation of Streetlight	lot	1.00	In Words: Pesos: _____ _____ _____ In Figures: _____	In Words: Pesos: _____ _____ _____ In Figures: _____
SPL 7	5kW Hybrid System	lot	1.00	In Words: Pesos: _____ _____ _____ In Figures: _____	In Words: Pesos: _____ _____ _____ In Figures: _____

AMOUNT IN WORDS:

Submitted by:

Name & Signature of Bidder's Representative

Date: _____

Position

Name of Firm

Address